

Japanese American Service Committee



ANNUAL REPORT

2001-2002







## A CHANGING FABRIC

Founded in 1946, the Japanese American Service Committee (JASC) originally served the needs of the Issei and Nisei (the Japanese immigrants and their American-born children) who left World War II internment camps to start new lives in Chicago. As might be expected, those needs changed with time. This periodic reassessment and refocusing of energies to reflect the lives of its members has been a regular and necessary exercise during the JASC's more than 50 years of existence.

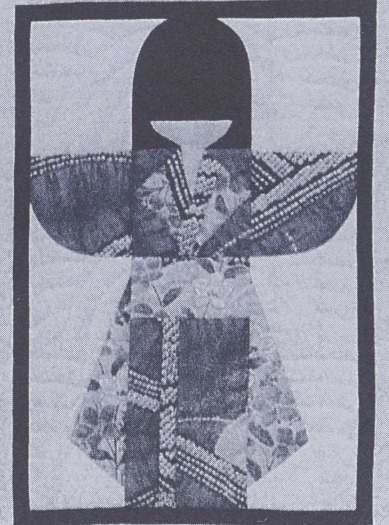
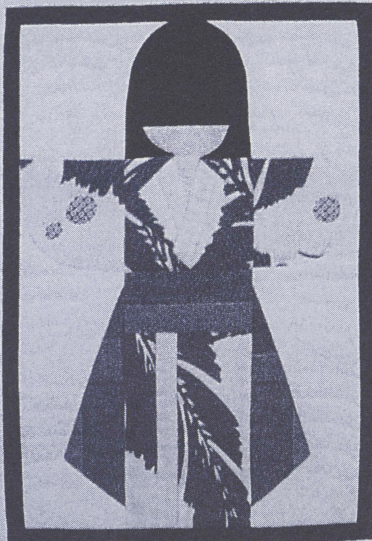
In June 2002, the following revision of the organization's mission statement was approved at the annual Membership meeting.

*The mission of the Japanese American Service Committee is to provide comprehensive social services such as adult day care, home support care and counseling to the diverse community of the greater Chicagoland area. The JASC is also dedicated to raising awareness and preserving its Japanese American heritage through the presentation of educational and cultural programming.*

Providing social services and preserving Japanese

American heritage. *This is how the JASC strengthens the fabric of the community today. This is how the JASC works each and every day.*







## CONNECTING WITH OUR SENIORS

On a given winter morning, a visitor to the JASC might notice a group of senior citizens seated at tables in the Adult Day Services area. They are going over the news of the day with one of the activity leaders. This is one of the many ways in which Adult Day Services helps seniors keep in touch with themselves, each other, and the outside world.



Seniors who are emotionally and socially involved and who maintain their physical well-being can avoid or delay being placed into nursing homes. Thus, Adult Day Services offers activities, games, and exercise, as well as the opportunity to dine with others in a group setting. It uses holiday celebrations to involve families in the group . . . or to create an extended family for clients who have no close relatives.



On that same winter morning, a visitor might find the supervisor of Home Support Services placing calls to the homes of other seniors. She asks about their health, inquires whether their homes are adequately heated during the ongoing cold snap, and tells them about an upcoming community event at the JASC. At that moment, in other parts of the city, the homemakers on her staff are arriving at clients' homes to clean, to put away groceries they purchased, or to cook something tasty for the evening meal.



Helping senior citizens live

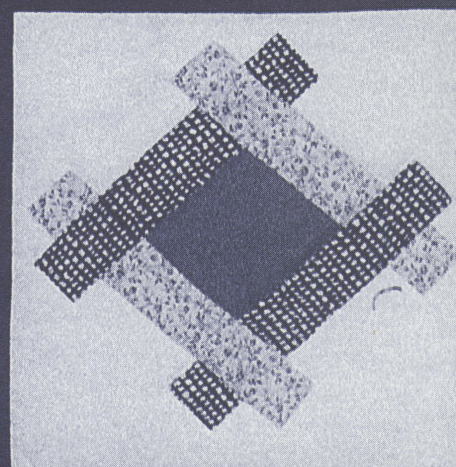
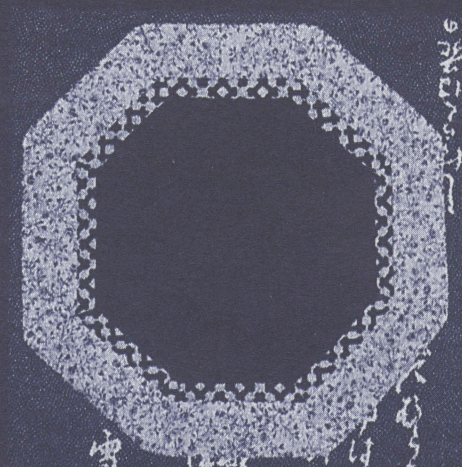
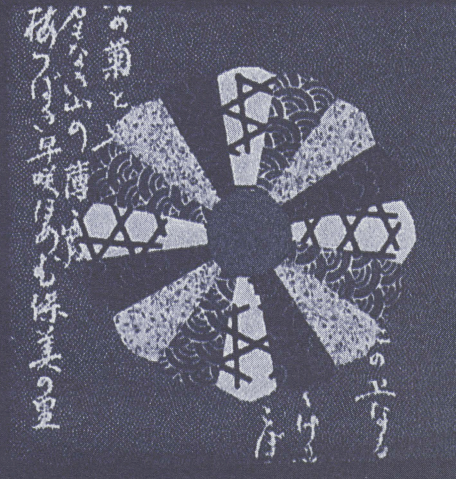
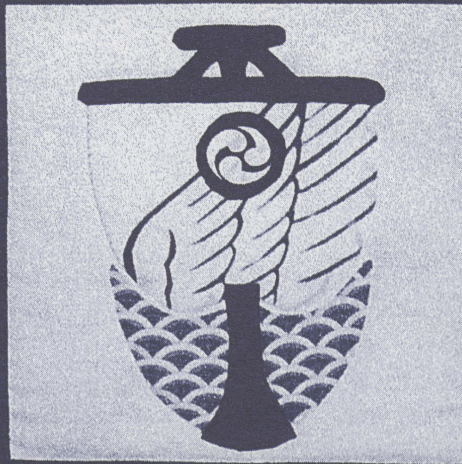
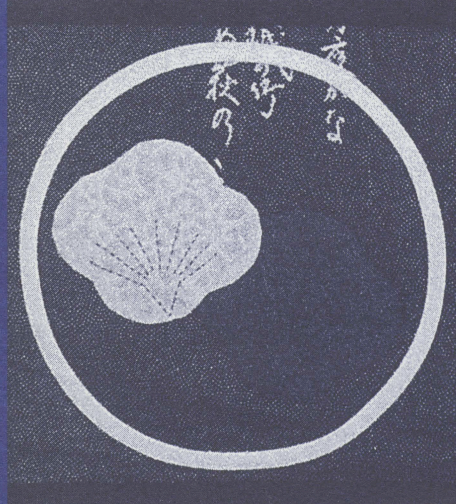
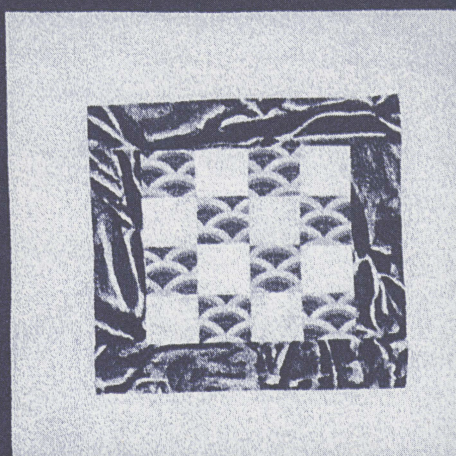
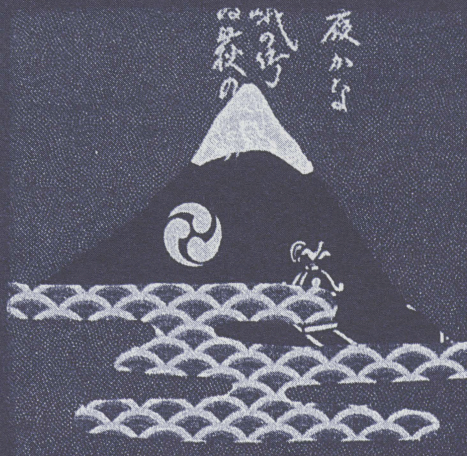
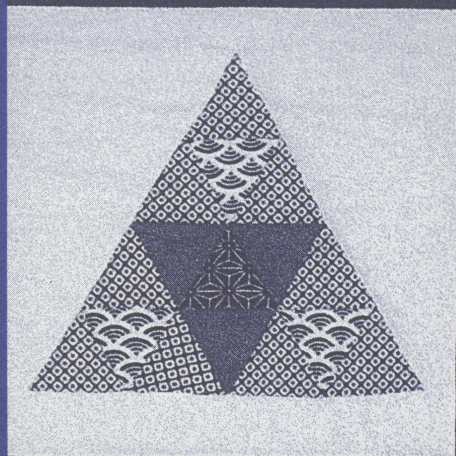
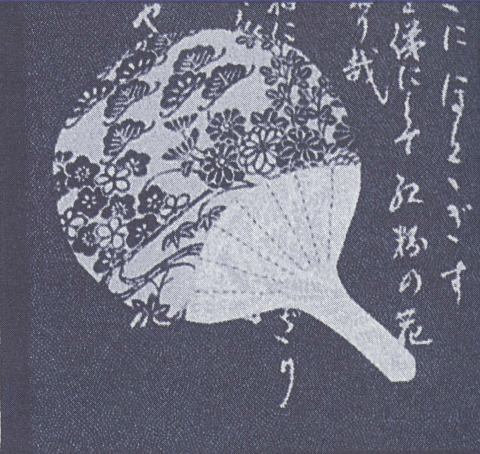
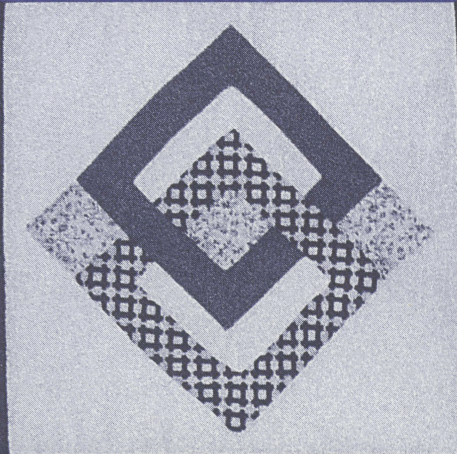
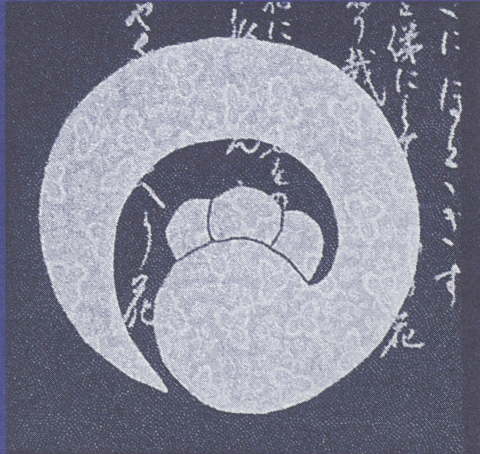
independently, comfortably,

and safely in their own

homes for as long as they can.

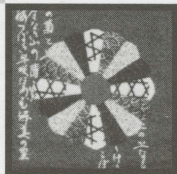
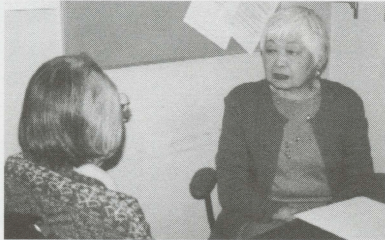
*This is how the JASC  
strengthens the fabric of the community today.*







## CONNECTING ACROSS BARRIERS



On another day, a visitor might enter the JASC building just as the social worker from the Casework and Counseling program is leaving. She is rushing out to meet with a family who lives in a suburb of Chicago. The family has recently arrived from Japan and needs some assistance in registering the oldest child for the upcoming term at the local high school. The social worker, who speaks both English and Japanese fluently, serves as translator, making sure that the parents and school officials understand each other's expectations.

Later in the day, she visits a married couple at their home. The wife is from Japan; the husband is an American of European heritage. Recently married, they quickly discovered that each had behavioral quirks that the other could not tolerate. Over time, the social worker helps the couple to identify the issues that are troubling them and to understand the ethnic or cultural bases for their problems.

Back at the office, the social worker checks her calendar and notes that the regular group meeting at a nearby seniors' residence is to take place in a few days' time. These meetings allow group members to exchange views on a number of topics in an informal, friendly setting. Many discussions focus on issues associated with aging, and allow participants to voice their concerns before a sympathetic and supportive audience.

Helping people bridge the gaps caused by  
differences in language, custom, or age that  
separate them from others.

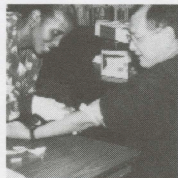
*This is how the JASC  
strengthens the fabric of the community today.*







## CONNECTING WITH OUR HEALTH



A visitor who enters the JASC building might find himself or herself swept along with a crowd of people who have come to take advantage of low-cost diagnostic tests. Twice a year, the JASC organizes Health Screening events that allow participants to monitor their cholesterol levels, as well as other disease indicators. Results, together with general advice from a physician, are mailed directly to the participants.

Once a year, seniors can come to the JASC for free flu and pneumonia shots from the Chicago Department on Aging and the Chicago Department of Public Health. And on weekdays throughout the year, the JASC and the Chicago Department on Aging offer healthful, low-cost lunches through the Golden Diners program. The opportunity to take meals in the company of friends is an extra benefit.

A visit to the JASC can also demand quiet attention. Driver's education courses developed by the American Association of Retired Persons are offered in both English and Japanese. Also offered in either language is a review of the State of Illinois Rules of the Road.

Tai chi classes, with ongoing sessions taught at three different levels, focus the quiet inward. Students old and young gather to perform graceful, flowing motions together, gaining strength, flexibility, and serenity.

Helping people maintain optimal

health of the body, mind, or spirit . . .

or all three.

*This is how the JASC  
strengthens the fabric of the community today.*







## CONNECTING WITH OUR ROOTS

A visit to the JASC can open a door to the past. A high school student may call the JASC's Legacy Center archives and library to do research for a history project on World War II internment camps. A researcher may search the holdings for material documenting the eastward migration of Japanese Americans who had lived in a certain region of California. A family may contact the archivist, offering to donate to the JASC collection a number of wartime diaries and letters written by their Issei grandfather.



The door also may open to reveal an opportunity to experience a traditional Japanese art or craft. Classes in ikebana and sumi-e—flower-arranging and ink-and-brush painting—are offered on a regular basis, as are classes in origami, or paper-folding. Food, of course, is the strongest and most accessible means to achieve a cultural connection. Japanese cooking classes give students a chance to focus on a specific technique—such as sushi-making—or a traditional menu—such as the New Year's table.

Others may prefer to establish their own cultural connections on a one-on-one basis. In Japanese language classes they can learn conversational and reading basics in an informal, friendly setting.

Helping people gain an understanding

of Japanese Americans and their historical

and cultural roots.

*This is how the JASC  
strengthens the fabric of the community today.  
This is how the JASC works each and every day.*



## From the President

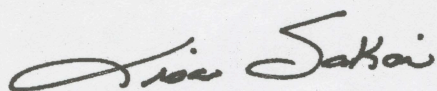
Dear Friends:

It's amazing how quickly things can change. At the start of the new Millennium the world was filled with the hope of a new era. We marveled at the accomplishments and discoveries mankind had made over the centuries and looked forward to a future where the possibilities seemed endless. Here at the JASC we shared the same optimism. To better serve our community, we planned exciting new programs targeting our multi-generational community. We even talked about a substantial building renovation that would turn our Clark Street location into a true community center. Unfortunately, that rosy future was short-lived. With the horrific terrorist attacks on September 11, 2001, we all suddenly realized how fragile and vulnerable tomorrow is.

Today we are at war and in the middle of a dismal economy. The future is uncertain and I know how hard it is to think beyond the health and safety of your immediate family. However, I am asking you to do just that. Now, more than ever, we need to reach out to each other.

The record amount of charitable giving to the families of those lost on 9/11 was wonderful to see. But the JASC needs your help, too. The slow down in the economy has severely impacted our financial resources on many fronts. Corporate sponsorships are substantially decreased as companies struggle to reduce their costs. The State and Federal budget deficits have government reducing their payments to us, and lower interest rates have reduced the amount of income we earn from our investments. Even the United Way, one of our traditional sources for our social service funding, has had to cut back on their allocation to us. All of this results in an uncertain financial future for the JASC. However, in spite of the gloom and doom we have hope. Hope because there are people like you who realize the difference one person can make. Hope because there are people like you who understand the importance of the JASC and its place in our community. Hope because there are people like you who want to make sure the JASC will still be around for our children.

The JASC shows the world the positive impact an ethnically diverse population can have on the strength and freedom of society. We're here making a positive difference in someone's life. We're here because the way to combat hate and bigotry is through education and awareness. We're here now and, with your help, we'll be here tomorrow.



Lisa Sakai

PRESIDENT





# From the Executive Director

Dear Friends:

It is hard to believe that I am coming to the end of my fifth year as Executive Director. Thinking back on why I decided to take the position, I know it had to do with the feeling that the JASC leadership, staff, and members were looking for a change and wanted to move the community forward. There has been a lot of change: upgraded electrical and computer systems; a new bus donated by the William T. Yamamoto family; a wheelchair-accessible van purchased to expand services; new classes; co-sponsorship of "Reminiscing in Swingtime" at the Museum of Contemporary Art with the Chicago Japanese American Historical Society and the Asian American Jazz Fest 2001. We had new initiatives such as the Nikkei Community Assessment, the Legacy Center, and the Asian American bone marrow donor drives. We have brought together diverse audiences through unique experiences such as Japanese storytelling events and Taiko workshops. We have expanded the diversity of who we are and whom we serve so that all are welcome to the JASC.

We are interconnected with a larger community. We were privileged to participate in the first two national Nikkei conferences and to witness the unveiling of the National Japanese American Memorial to Patriotism. We worked in coalition with other Asian and non-Asian groups to educate ourselves and others to prevent hate crimes. With the rest of the nation, we mourned the tragedies of 9/11, and we felt proud that Americans of Japanese ancestry stood up for the civil rights of Muslims, Arab Americans, and others perceived as the enemy. Sometimes we initiated changes, sometimes changes were forced upon us. Through all of this, we have continued to move forward.

From these "pieces of our quilt" we have created an interesting yet beautiful pattern. However, the poor economy has forced us to face one of our biggest challenges. Corporate and foundation partners are reducing their support. Interest revenue is at an all-time low. At the same time, all expenses have increased dramatically, from utilities to health insurance benefits. In response, we have tripled our fundraising; we have improved the building to attract many groups and organizations; we have preserved our endowment; and we squeeze every penny. Unfortunately, all of these measures will not be enough to address an ever-widening gap between revenue and the cost of providing services.

There is hope. Our greatest assets are the people who care about the Nikkei community and the JASC. We have the hardest working and most creative staff who are also volunteers and donors, giving above and beyond what anyone could ask of them. We can meet this challenge as we have in the past, with the active participation of members, volunteers, board members, organizations, and corporations working positively together.

In Deepest Gratitude,

*Jean M. Fujiu*

Jean M. Fujiu

EXECUTIVE DIRECTOR





## JASCのソーシャル・プログラムとコミュニティ・プログラム

JASCは1946年、戦時強制収容所を出た日系一世や二世の、シカゴでの生活再建を支えるために設立された、互助団体でした。日系人が新しい生活の基盤を築いた時点で、丁度引退の時期を迎えた一世のための、高齢者向けの社会福祉プログラムが多く取り入れられるようになりました。

こうしてシカゴの日系社会に、アダルト・デイ・サービスやホームメーカー・サービス、日英バイリンガルのカウンセリング・サービス、それに加えてヘルス・スクリーニングやフルーの予防注射などのコミュニティ・プログラムや各種文化教室、セミナーなどを提供して、ここに半世紀を超える歴史を築きあげました。現在では下記に挙げるプログラムは日系に留まらず、広くアジア系市民、コミュニティ全般に開放され、誰もが日本文化を背景にしたきめ細かいサービスを受けられます。

### **アダルト・デイ・サービス** (コーディネーター：メルバ・リストウ、RN 内線39)

介護をする家族の負担を軽減し、クライアントが心身の健康を維持しながらより豊かな日常生活を送れるように、体操、ゲーム、クイズ、手工芸、陶芸、フィールド・トリップ 音楽会など各種のプログラムを日課に取り入れています。必要に応じて血圧測定や服薬など常勤のナースの世話が受けられます。

このプログラムには軽い朝食、栄養豊かな日替わりメニューの昼食、午後のスナックが含まれ、制限区域内であれば自宅と当センター間のバス送迎も可能です。

### **ホームサポート・サービス** (スーパーバイザー：ヘレン・ナカヤマ 内線28)

一人住まいの高齢者が、あるいは同居者がいても多忙で十分なケアや家事が出来ない場合、病後で体力の戻っていない方などが、施設に入所せず自宅で、出来るだけ独立した日常生活を送れるように、ホーム・メーカーを派遣してそのお手伝いをします。このプログラムでは、身体の不自由なシニアのために、掃除、洗濯、買い物、通院の付き添い、ホーム・ドクターとの連絡、特別なダイエットを含む食事の準備、健康保持のためのアドバイス、入浴や身支度の介助などのサービスをしています。スケジュールに空きがあれば、プライベートのクライアントの要望にも応じます。

### **カウンセリングおよびケース・ワーク** (ソーシャル・ワーカー：フランシス・チカヒサ、LCSW 内線25)

家族間、あるいは友人、職場での人間関係など、考え方の違いや意思の疎通がうまくゆかないなど、私達の生活のなかにはいろいろな軋轢がありストレスが溜まるものです。国際結婚による夫婦間のトラブルや、企業の駐在員家族の中には、言葉の問題や異文化に適應してゆけずに苦しんでいる子供たちもいます。精神面の健康問題はなかなか相談しにくいものですが、早めに専門家のカウンセリングを受けて、問題の芽が小さいうちに解決しましょう。

### **文化教室・コミュニティ・プログラム** (担当：シャロン・ハラダ 内線29 / 川口加代子 内線26)

私たちは、日系社会の福祉団体として日本文化の継承や普及もまた、大切な役目だという認識をもっています。日本料理、生け花、折り紙、日本語、墨絵、陶芸、など各種文化教室を開設しています。その他、年2回の血液検査による健康診断やフルーの予防注射、シニアドライバーの安全運転セミナーなども開催しています。

### **レガシー・センター** (アーカイヴィスト：デボラ・ミエコ・バーンズ 内線22)

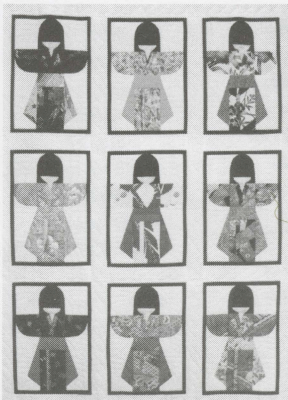
レガシー・センターの目的はシカゴ周辺6郡の日系人の遺産である歴史的資料を収集して、系統立てて整理・保管し、学生および一般のリサーチャーに、必要に応じて公開することです。昨年も多くの高校生、大学生らが日系の歴史を調べ、レポートを提出するためにセンターを訪れました。資料の閲覧を希望する方は、日時を予約してください。

ソーシャル・サービスの連絡先は773・275・7212      その他のプログラムは773・275・0097です。

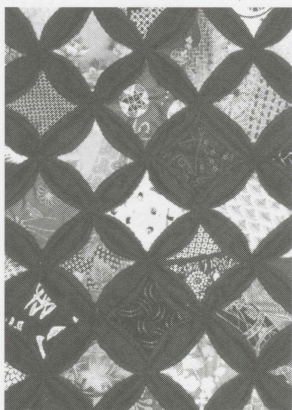
日本語でのお問い合わせは川口加代子(773・275・0097 内線26)へ、お電話ください。



## Featured Artists



Ritsuko Inouye developed her sewing skills in Independence, Oregon, her hometown. After the start of World War II, she and her family were evacuated first to the Tule Lake Relocation Center in California and then to the Minidoka Relocation Center in Idaho, where she married George Inouye. After their release from camp, the couple eventually settled in Chicago and raised their two daughters. Mrs. Inouye began to create quilts after she retired as a dressmaker. At first she used traditional American quilt patterns, but in time she found her own style, incorporating Japanese motifs into her works. Once a month from October through May, Mrs. Inouye leads meetings of the JASC's Quilting Club. She created the quilts that appear on the front cover and pages 2, 4, 6, and 8.



Joyce Morimoto is a quilting student of Ritsuko Inouye. A Sansei, she grew up in Chicago and learned to sew from her mother. Like her teacher, Joyce draws inspiration from Japanese design motifs and works ethnic textiles into her quilt creations. Joyce is a member of the JASC Board of Directors and works as a children's museum and exhibit concept developer. She and her husband, Rick, have two children, Emiko and Kenji. Joyce created the quilt that appears on page 10.

Black and white photo processing donated by Akai Photo Lab, Chicago, IL.



# JASC Donations

## Corporate Members

Diversey-Paulina Building Corp.

## Corporate

Kraft Foods, Inc.  
Omron Foundation, Inc.

## Foundation Grants/ Matching Gifts

Aetna Foundation  
BlueCross BlueShield of Illinois  
Chicago Japanese American Council  
Japanese Chamber of Commerce &  
Industry of Chicago  
Doris Duke Charitable Foundation  
Industrial Bank of Japan  
Monsanto Fund Matching Gift Center  
Prudential Foundation Matching Gifts  
The Quaker Oats Foundation  
United Way/Crusade of Mercy—  
Asian American Community  
Outreach Committee  
Woods Foundation of Chicago

## Government

Chicago Department of Cultural Affairs  
Illinois Arts Council  
Illinois Department on Aging  
Illinois Department of Commerce &  
Community Affairs  
National Historical Publications and  
Records Commission (NHPRC)

## Organizations

United Methodist Women of  
Ravenswood Fellowship UMC

## Organizations In-Kind

American Airlines  
Asian American Law Enforcement  
Association  
Bob Chinn's Crab House  
Buddhist Temple of Chicago  
Chicago Japanese American Council  
Chicago Mounted Police  
Christ Church of Chicago  
City of Chicago/Park District  
Devon Church of Jesus Christ  
Genki Walking Group  
Heiwa Terrace  
Japan Information Center  
JFC International, Inc.  
Joseph Stockton Elementary School  
Kikkoman Foods, Inc.  
Lakeside Japanese Christian Church  
Midwest Buddhist Temple  
Mitsuwa Marketplace  
Nal's Auto Service  
Natural Selection  
New Horizons (JACL)  
Nisei Post #1183  
Parody Productions/Allan Meyer  
Ravenswood Fellowship United Methodist  
Church  
Sansei Yonsei Athletic Association  
Sun-Wah Restaurant  
Sunshine Café  
Tampopo  
Toguri Mercantile Co.  
Tohkon Judo Academy  
Triangle Camera  
United Bindery Services, Inc.  
Uptown Ace Hardware  
Whitney Young High School

## Individuals

Amy Abe  
William A. Aki  
Joe Akiyama  
Richard Amano  
D/M Minoru Amimoto  
Anonymous  
M/M Herbert K. Aragaki  
John Asai  
Noboru James Asato  
Janet Ayers  
Mary M. Bingo  
Frances Chikahisa  
Thomas A. Corbett  
Mineko Der Weduwe  
Betsy Kirkley Edwards  
Yaho Fujii  
Kiyoko Kasai Fujii  
Mary M. Fukami  
Evelyn Garbo

Steven Hamlin  
Roy M. Hashimoto  
Mickey Hatfield  
Albert Hayashi  
Memmy Hirakawa  
Tats Hirotsuka  
Rev. Gloria Hopewell  
Hisa Hori  
Jane Hyosaka  
Mary Y. Hyosaka  
Alice Y. Ichikawa  
Kanji Ichiki  
Grace Igasaki  
Jane Ike  
Estate of Mary Sasabe Ikeda  
Charles Inamine  
M/M George Inouye  
Calvin Ishida  
John Iwaoka  
Ray Kagami  
Frank M. Kajikawa  
Albert Kamiya  
M/M Tosh Kasai  
M/M Jack Kawakami  
Frank Kaz Kawamoto  
Kazumi Kay Kawamoto  
Evelyn Kebo  
Lillian Kimoto  
Lillian C. Kimura  
Mina Kimura  
Randy Kimura  
Sumi Kobayashi  
Elyse Koren-Camarra  
Minnie Kubose  
D/M Roy Y. Kurotsuchi  
M/M Shigeru Kushi  
Yurie Kushino  
Martha Makino  
Julie I. Marden  
Charles Martinez  
Hiromu Masumoto  
Shigeyo Matsuda  
Ben Matsuoka  
Gordon J. McKinnon  
M/M Steven Y. Minaga  
Gregory Miyake  
Helen Miyake  
Tomo Miyake  
June K. Mori  
Mort Morita  
Pamela Morooka  
Donna Mukogawa  
Tomoye Muraoka  
M/M Shunichi Nakagawa  
Tsune S. Nakagawa  
Fujiye Nakamura  
Hiroshi Nakano  
Kurt Nakaoka  
D/M Katsumi Neeno  
Ruth Nehring  
Tim K. Nishimoto



John Nishimura  
 Susie S. Nishimura  
 Fusako Nitahara  
 Keiko Noma  
 Hideko Ogawa  
 Dr. Virginia Ohlson  
 Hana Okamoto  
 D/M Harry Omori  
 Hatsuko Omori  
 M/M James Onoda  
 Yuki Oshiro  
 M/M Glen Ostgaard  
 Merry Oya  
 Dr. Ryoichi Oyasu  
 M/M Sam Ozaki  
 M/M Yoji Ozaki  
 M/M Pedtke  
 M/M Philip Roth  
 M/M Jiro Sakamoto  
 Mikio Sano  
 M/M Frank Sasaki  
 M/M John Sasaki  
 Peggy Sasamoto  
 R/M Kei Satoh  
 Rosemary Shieh  
 Bruce Shimizu  
 M/M William Shimizu  
 Margaret Shintaku  
 Elsie Shiohara  
 Misao Shiratsuki  
 Chas. H. Shishida  
 Louise Sonoda  
 Jean S. Tahara  
 Rev. Shunjo Takahashi  
 M/M Kenichi J. Takaki  
 M/M John Takemoto  
 Marie Takeshita  
 Asako Takusagawa  
 M/M Takeshi Tanimoto  
 Sumie Tanimura  
 Hisako Tashiro  
 M/M Thomas S. Teraji  
 Iva Toguri  
 Chiye Tomihiro  
 Ada K. Tsurutani  
 Kazumi Unno  
 Hatayo "Hattie" Wallen  
 M/M Cary Wong  
 Hero Yamaguchi  
 Ruth Yamamoto  
 Mary Yamasaki  
 M/M George Yamate  
 Gary Yasutake  
 Lucille Yee  
 D/M Hidejiro Yokoo  
 M/M Ronald Yoshino  
 Nancy Young

## Individuals In-Kind

Anonymous 1  
 Anonymous 2  
 Roy Akune  
 Sue Capozziello  
 Susan Chapman  
 Phillip Elkins  
 Alan Endo  
 Jon Fujii  
 Pat Guida  
 Yosh Harada  
 Chiye Higashide  
 Esther Hurh/Tony Streit  
 Tomi Inouye  
 Sue Isoda  
 Michio Iwao  
 Ruby Izui  
 Len Kaihara  
 Dorothy & Hiroshi Kaneko  
 George Kato  
 Sakie Kawahara  
 Nobu Kay  
 JoAnn King  
 Sawako Kojima  
 Tomoko Kunita  
 Ruth Kumata  
 Pat Matsumoto  
 Keiko Matsushita  
 Helen Miyake  
 Sue Miyake  
 Tak & Junko Mizuta  
 Yoshiko Mori  
 George Morimitsu  
 Kim Amino Morton  
 Lisa Mukoyama  
 Carl & Miyo Muraoka  
 Marian Nakagawa  
 May Nakano  
 Mari Nishimoto  
 M/M Nishimoto  
 Asako Nishimura  
 Greg Nishimura  
 Annabelle Nishioka  
 Donna Ogura  
 M/M William Okamoto  
 Chieko Onoda  
 Haruko Oshiro  
 Merry Oya  
 Winnie Ricker  
 M/M Greg Rivera  
 Lisa Sakai  
 Harumi Sakoda  
 Louise Sonoda  
 Yoshimi Suzuki  
 Sadako Szathmary  
 David Tanimura  
 Toshiko Willgerodt  
 Dale & Laurie Wing  
 George Wong

Ms. Yokoo  
 M/M Yoshio Yamamoto  
 Yoshiko Yoshihara  
 M. Yoshimura  
 Shigeko Yoshimura  
 Alice Zimring

## 2001 Fuji Fest

### Corporate Sponsors

#### Purple Orchid Level

BlueCross & BlueShield of Illinois  
 Charles Schwab Corporation  
 Harmony Nursing and Rehabilitation Center  
 Japan Airlines  
 United Airlines  
 Yamamoto-Yoshida Family

#### Cherry Blossom Level

Ameritech  
 Manshio & Wallace  
 McDonald's Corporation  
 McKinsey & Company  
 TransAgra International, Inc.  
 United Bindery Services

#### Blue Iris Level

Masuda, Funai, Eifert & Mitchell  
 Uptown National Bank  
 Yamada & Associates

### Friends

D/M Min Amimoto  
 Noboru Asato  
 Mary Doi/Jac Cerney & Family  
 Yaho Fujii  
 Jae Kwan Ha  
 Richard C. Haberkorn & Family  
 M/M Yoshiro Harada & Family  
 Takeichi Miles Higa  
 Esther Hurh  
 M/M George Inouye  
 M/M Noboru Kikuta  
 Patricia Kubistal  
 Shigeyo Matsuda  
 M/M Jerry Matsumoto & Family  
 Mitutoyo Corporation  
 Shu Miyazaki  
 D/M Richard Morimoto  
 M/M Yoshinori Murata  
 R/M Masaru Nambu  
 Nomura Enterprises, Inc.



## JASC Donations

Linda Ogawa  
John Onoda  
Henry Sakai  
Plaridel Seneris  
M/M Osamu Tanabe  
Benjamin S. Tani  
Nancy Tom  
Chiye Tomihiro  
Judith Torigoe  
M/M Dudley Yatabe  
Lucille Yee  
Pauline Yoshioka  
Nancy Young

### Raffle and Silent Auction Donors

Anheuser-Busch  
Anne Namba Designs  
Ann Sather Restaurant  
Tatsu Aoki  
Auditorium Theatre Council  
BlueCross & BlueShield of Illinois  
John F. Bukacek  
Calo Restaurant  
Charles Ifergan Coiffures, Ltd.  
Chicago Blackhawks  
Chicago Bulls  
Chicago Cubs  
Chicago Kosaido Corporate, DBA Hilldale Golf Club  
Chicago Shakespeare Theatre  
Chicago Tribune  
Chicago White Sox  
Chicago Wolves  
Bob Chinn's Crab House  
City of Chicago, Dept. of Cultural Affairs  
Congresswoman Jan Schakowsky  
Court Theatre  
The Drake Hotel  
Roger Ebert  
Four Seasons Hotel Chicago  
Francesca's on Bryn Mawr Restaurant  
Frank's Jewelry  
Lisa Harada Fujikawa  
Jean Fujiu  
Goodman Theatre  
Harpo Studios  
Alice Hashimoto  
Yukiko Hasunuma  
Sam Himoto  
Hubbard Street Dance Company  
Pete Hironaka  
Tomi Inouye  
Ritsuko Inouye  
Yumiko Irei-Cole  
Itto Sushi  
Carol Iwata  
J. Toguri Mercantile  
Japan Airlines

Japanese American Service Committee of Chicago  
Japan So Small  
May Y. Kambara  
Kikkoman Foods, Inc.  
Kevin, The Restaurant  
Albert Koga/Marion Ishii  
Kurtis Productions  
LaStrada Ristorante  
Lawry's, The Prime Rib  
Lyric Opera of Chicago  
Marshall Field's Project Imagine  
McDonald's Corporation  
Midwest Aikido Center  
Carol Miyake  
Joyce and Rick Morimoto  
Museum of Contemporary Art  
New Japan Restaurant  
Nikkei Traditions  
Takeko Nomiya  
North American Bear Company  
Rick O'Dell Nozaki  
Kevin Okazaki  
Chieko Onoda  
Onomoli Fine Jewelry  
Phil Stefani Restaurants  
Lidia Rozmus  
RiverBikes of Chicago  
Saito, Inc.  
Lisa Sakai  
Schaefer's Fine Wines Food & Spirits  
Masako Shimizu  
Anne Shimojima  
Haru Shimojima  
Shinsen, J.C., Ltd.  
Stir Friday Night!  
Stuart Rodgers Photography  
Glenn Sugiyama  
Jim Tribolet—Designed Fitness  
Naomi Negi Tran  
Thai Grill Restaurant  
Thousand Waves Spa  
Chiye Tomihiro  
Trio Restaurant  
United Airlines  
Uptown National Bank of Chicago  
Urban Oasis  
Joel Wilcoxon  
Toshiko Willgerodt  
Nemie Wren  
Yamamoto-Yoshida Family  
Yonamine Company

### Supporters

(Businesses, organizations, or individual who bought tables)

Jody Oshita Bajor  
Buddhist Temple of Chicago  
Christ Church of Chicago  
Yaho Fujii  
Kiyoko Kasai Fujiu

JACL  
Midwest Buddhist Temple  
New Chicago Japanese American Association  
Glenn Sugiyama  
Cary Wong  
Sandra Yamate  
Kiyo Yoshimura

## 2001 Holiday Appeal Donors

Stir-Friday Night!  
M/M Joseph Aberer  
Yoshiko Adaniya  
Mariko I. Aki  
Anonymous  
M/M Toru Aoki  
D/M Harold Arai  
M/M Takeru Asa  
Memi Asakura  
Janet Ayers  
Alyse Azuma  
D/M Ben Chikaraishi  
M/M Walter/Judy Demchuk  
M/M Alan Endo  
M/M Benjamin Fujimoto  
Martin H. Fujimoto  
M/M Mitsuo Fujishima  
Martha M. Fukami  
Ikuko Furusawa  
Yoshimi Golden  
M/M Jim Goodman  
Charles Hanano  
M/M Aylene I. Hasegawa  
Tomi Iijima  
Tetsuo Iko  
D/M Seiji Itahara  
Joe Iwaoka  
May Kambara  
Yoneko Frances Kawabata  
M/M Noboru Kikuta  
April Kimura  
Jo Ann C. King  
M/M Roy Koizumi  
Christopher Takashi Kondo  
M/M Pavel Kraus  
Patricia Kubistal  
M/M James Kumaki  
M/M Hiroshi Kuwashima  
C. Lanioloha Lee-Sumberg  
Calvin Manshio  
Hiromu Masumoto  
Ben Matsuoka  
M/M Shigemitsu Mazawa  
M/M Chico Minaga  
M/M Shu Miyazaki



M/M Takanori Mizuta  
 Dr. Paul Morimoto  
 D/M Richard Morimoto  
 Jessie Morisato  
 D/M Mototsugu Morita  
 Mary Muramoto  
 Dr. Alice Murata  
 Mary Nakagawa  
 Hisako Nakamoto  
 Lillian Y. Nakamoto  
 Carolyn K. Nakamura  
 Fujiye Nakamura  
 Kurt Nakaoka  
 Arthur Nishimura  
 Asako Nishimura  
 June Oda  
 Elsie Ogawa  
 Linda Ogawa  
 M/M Robert Ogi  
 M/M William Okamoto  
 Lydia Omori  
 Mitzi Omura  
 M/M Hideo Onoda  
 M/M Dick Oshima  
 M/M Robert K. Oshiro  
 Marie K. Otaka  
 Hon. Sandra R. Otaka  
 Michiko Payson-Kameda  
 M/M Robert Prosise  
 Toshiko Sahara  
 Henry K. Sakai  
 Toshi Sakata  
 M/M Mitsuzo Shida  
 Nami Shio  
 M/M Shiro F. Shiraga  
 Midori Sugimoto  
 Joseph K. Suzuki  
 Midori Takaki  
 Chizu Takaoka  
 Hideko Tamura  
 Robert Tanaka  
 Jim Tanouye  
 Hiro Tokubo  
 M/M George Torimaru  
 M/M Chikaji Tsurusaki  
 George K. Uchima  
 M/M William Ujiiye  
 Henry Umeki  
 M/M Linda Kawano/Charles Valauskas  
 Karen Vargas  
 D/M Wesley K. Watanabe  
 M/M Kenneth Yahiro  
 M/M Ben K. Yamagiwa  
 Kay K. Yamagiwa  
 Terri Yamaguchi

## 2002 Reminiscing in Swingtime

M/M Yosh Amino  
 Anonymous  
 M/M Takeru Asa  
 M/M Debbie & Bob Burns  
 Frances Chikahisa  
 D/M Ben Chikaraishi  
 M/M Jac Cerney/Mary Doi  
 M/M Paul Doi  
 M/M Barbara Finn/Merrick  
 Yaho Fujii  
 M/M Mitsuo Fujishima  
 Jean M. Fujii  
 Kiyoko Kasai Fujii  
 M/M Charles Furuyama  
 Richard C. Haberkorn  
 June Harada  
 D/M Michael Harada  
 M/M Patricia Harada/Tom Rowland  
 M/M Yoshiro Harada  
 Ross Harano  
 M/M Howard Hieshima  
 D/M Seiji Itahara  
 Jo Ann C. King  
 Erika V. Kono  
 Elyse Koren-Camarra  
 Ruth Kumata  
 M/M Peggy Wallace/Calvin Manshio  
 M/M Jerry Matsumoto  
 M/M Kimitsu Matsumoto  
 Dean H. Matsuo  
 M/M Hiro Mayeda  
 Allen H. Meyer  
 M/M James Mishima  
 M/M Hiro Miyagawa  
 M/M Giichi Moriwaki  
 Dr. Alice Murata  
 Tsune S. Nakagawa  
 Mieko Nasu  
 Asako Nishimura  
 Dianne Nishimura  
 Takeko A. Nomiya  
 June Oda  
 Lynn Oda  
 Yasuko Okigawa  
 Lydia Omori  
 M/M Hoson Oshita  
 Hon. Sandra R. Otaka  
 Merry Oya  
 M/M Sam Ozaki  
 Nicole Pfeiffer  
 M/M Robert Prosise  
 Hermia Ramos  
 M/M Minoru Saito  
 Henry K. Sakai  
 Hirao Smokey Sakurada  
 M/M Ai Shimizu  
 Anne Shimojima

M/M Shiro F. Shiraga  
 Sadako Szathmary  
 M/M Kiyoshi Tamanaha  
 Benjamin S. Tani  
 Sadako Tengan  
 M/M David Toguri  
 Jennifer K. Toguri  
 Ryan Toguri  
 Chiye Tomihiro  
 Lydia Tomita  
 Dr. Roy K. A. Wesley  
 M/M Brooke Whitted  
 Atsuno B. Yamaguchi  
 Alice E. Yamamoto  
 M/M Dudley Yatabe  
 M/M Daniel Yoshida  
 Kiyo Yoshimura  
 M/M Masami Yoshinari

## JASC Scholarship Funds

Anheuser Busch  
 Sam Fukaye  
 Frank T. Kambara  
 Fred Toguri  
 William T. Yamamoto

## Masaru Nambu Internship Fund

A summer internship program has been designed for a high school or college student to gain experience in the social service field. No donations were received in FY 2002. However, donations will be gratefully accepted to continue this worthwhile fund.



## Memorial Gifts

### DONOR

American Osteopathic Association  
 Anonymous  
 M/M Yosh Amino  
 M/M Yosh Amino  
 M/M Yosh Amino  
 Dr. Katherine M. Arens  
 M/M Paul Ase  
 M/M Debbie & Bob Burns  
 M/M Debbie & Bob Burns  
 M/M Richard Connors  
 Ms. Judith E. Fors  
 M/M Frank Fujihara  
 M/M Frank Fujihara  
 Mrs. Mary Fujii  
 Ms. Jean M. Fujiu  
 Ms. Kiyoko Kasai Fujiu  
 Ms. Kiyoko Kasai Fujiu  
 M/M Henry Fujiura  
 Mrs. Alice Fukuyama  
 Mrs. Namiye Hanamoto  
 Mrs. Namiye Hanamoto  
 M/M Yoshiro Harada  
 M/M Yoshiro Harada  
 M/M Yoshiro Harada  
 M/M Yoshiro Harada  
 M/M Yoshiro Harada  
 M/M Yoshiro Harada  
 M/M Yoshiro Harada  
 M/M Yoshiro Harada  
 M/M Yoshiro Harada  
 M/M Yoshiro Harada  
 Mr. Albert Hayashi  
  
 Rachel D. Kohler/  
 Mark S. Hoplamazian  
 M/M Kaz Horita  
 Mr. Tom T. Horita  
 M/M E. F. & Jan Huskisson  
 Ms. Alice Y. Ichikawa  
 Ms. Marion Ishii  
 Mr. Michio Iwao  
 Ms. Ellyn J. Iwaoka  
 Ms. Judy M. Iwaoka  
 Dr. Robert S. Iwaoka  
 M/M Thomas Kaihara

### IN MEMORY OF

Alice Kawamura  
 May Tanii  
 Haru Kanemoto  
 Mary Koga  
 George Izui  
 Kay Watanabe  
 Haru Kanemoto  
 Haruko Kanemoto  
 George Izui  
 George Izui  
 Dr. Thomas A. Fujibayashi  
 George Izui  
 George Izui  
 Masao Fujii and Kay K. Fujii  
 Haru Kanemoto  
 George Izui  
 Leland S. Takao  
 George Izui  
 Dick K. Fukuyama  
 Frances Tanaka  
 Marge Rheume  
 Henry Shimojima  
 Ted Miyata  
 Eric Yamauchi  
 Ted Tanimura  
 Liz Isoda  
 Yozzo Kurokawa  
 Ike Mayeda  
 Jim Isono  
 Paul Kageyama  
 Akira Morimoto  
 Chiyoko Yamakuwa &  
 Roy Hayashi  
  
 Martha Nomura  
 Haru Kanemoto  
 Haru Kanemoto  
 Kay Watanabe  
 Mary Koga  
 Mary Koga  
 Emiko Iwao  
 Sam Iwaoka  
 Frank Morimitsu  
 Alex Taro Iwaoka  
 George Izui

### DONOR

Dr. Jewel M. Kanai  
 M/M Neil Y. Kanemoto  
 M/M Yoshio Kawaguchi  
 M/M Yoshio Kawaguchi  
 M/M Yoshio Kawaguchi  
 M/M Eugene Kimura  
 Ms. Mina Kimura  
 Mr. Albert Koga  
 Ms. Ruth Kumata  
 Mrs. Yemiko Kurokawa  
 Estate of Alice Mayeda  
 M/M Glen Miller  
 M/M Ted S. Mizuno  
 Mrs. Maudie Noma  
 Mr. Kenneth Oba  
 Mr. Casey H. Omori  
 Mr. Casey H. Omori  
 Mr. Casey H. Omori  
 Mr. Casey H. Omori  
 M/M Sam Ozaki  
 Pritzker Foundation  
 Mr. Terrence A. Prorok  
 M/M Steven Sakuma  
 Mr. Hirao Smokey Sakurada  
 Mr. Hirao Smokey Sakurada  
 M/M Mary Samson  
 Mrs. Sachi Suzuki  
 M/M David Takada  
 M/M David Takada  
 Ms. Shuko Sara Takeuchi  
 M/M Seizo Tamura  
 Mrs. Sue Terusaki  
 Mrs. Lily M. Turuda  
 Mrs. Lily M. Turuda  
 Mrs. Lily M. Turuda  
 Ms. Janice Wachtler  
 Mrs. Dorothy T. Wakamatsu  
 Ms. Nancy J. Wilke  
 Ms. Mary Yamasaki  
 M/M Daniel Yoshida  
 M/M Daniel Yoshida  
 Mrs. Shigeko Yoshimura  
 M/M William J. Yoshino  
 M/M William J. Yoshino  
 M/M Simon Zunamon

### IN MEMORY OF

Alice K. Kawamura  
 Haruko Kanemoto  
 Haru Kanemoto  
 Henry Shimojima  
 Mary Koga  
 Haruko Kanemoto  
 Waka Kimura  
 Mary Koga  
 Haruko Kanemoto  
 Yozzo George Kurokawa  
 Alice Mayeda  
 Martha M. Nomura  
 George Izui  
 George Izui  
 George Oba  
 George Izui  
 Rei Omori  
 Haruko Kanemoto  
 George K. Omori  
 Haru Kanemoto  
 Martha M. Nomura  
 George Oba  
 Waka Kimura  
 Haru Kanemoto  
 George Izui  
 Haru Kanemoto  
 Hank Suzuki  
 George Izui  
 Haru Kanemoto  
 Waka Kimura  
 Kenji Matsumoto  
 Ben H. Terusaki  
 Tadao Kanetomo  
 Frances Tanaka  
 Marge Rheume  
 Alice Kawamura  
 George Izui  
 Martha Nomura  
 Fred Ota  
 William Yamamoto  
 Paul Hasegawa  
 Hideo David Yoshimura  
 Henry Shimojima  
 Ted Tadashi Tanimura  
 Martha M. Nomura



## In Honor/Recognition Donation

### DONOR

M/M Masuto Fujii  
Mr. Richard B. Fujii  
Mrs. Tomiye Fujii  
M/M H. W. Nagata  
Mr. Jimmy Shiode  
Mrs. Yoshimi Suzuki  
Ms. Shuko Sara Takeuchi

### PERSON IN HONOR/RECOGNITION OF

Marriage of Kathy Fujii and Bill Davis  
Marriage of Kathy Fujii and Bill Davis  
Mrs. Tomiye Fujii's birthday  
Marriage of Kathy Fuji and Bill Davis  
Marriage of Kathy Fujii and Bill Davis  
Marriage of Kathy Fujii and Bill Davis  
Birth of Topham twins

## 2002 Special Membership

### SPONSOR

Mr. Herman Gold  
M/M Ayleen I. Hasegawa  
M/M Minoru Saito  
Mr. Henry K. Sakai  
Ms. Nikki Smith  
Mr. Go Sugiura  
Mr. Benjamin S. Tani  
Ms. Kiyo Yoshimura

### FRIEND

Ms. Janet Ayers  
M/M Noboru Honda  
Hon. Lynne Kawamoto  
Mr. Christopher Takashi Kondo  
Mr. Hiromu Masumoto  
Mr. James I. Matsumoto  
Ms. Masako I. Matsumoto  
Northside Friends  
Mr. Hirao Smokey Sakurada  
M/M Lawrence D. Schectman  
Dr. Tom Shimoda  
Ms. Nancy Tom  
Mr. Takeshi Yamashita  
M/M Masami Yoshinari

This FY 2002 annual report covers the time period July 1, 2001, to June 30, 2002.

If we have inadvertently omitted your name from any list, please call the JASC office and let us know.  
Thank you.

The 2002 JASC Membership List can now be found in the Member Services & Programs book.



# JASC Condensed Statement of Activities

Condensed Statement of Activities for the year ended June 30, 2002.

## Support and Revenue:

### PUBLIC SUPPORT

Contributions	\$ 119,397	
United Way Allocation	76,147	
Membership	34,505	
Special Events (net)	98,648	\$ 328,697

GOVERNMENTAL AGENCIES SUPPORT 264,086

### REVENUE

Program Fees	124,663	
Activity Fees	42,414	
Interest & Dividend Income	38,991	206,068

TOTAL SUPPORT AND REVENUE 798,851

## Expenses:

PROGRAM SERVICES	654,758
SUPPORT SERVICES	331,519

TOTAL EXPENSES 986,277

Excess of Expenses over Support and Revenue (\$ 187,426)

A complete copy of these financial statements, audited by Yamada & Associates, P.C., is available for viewing at our office.



## JASC BOARD OF DIRECTORS

### Executive Board

**President** Lisa Sakai

Vice President, TransAgra International

**VP Public Relations** Pat Matsumoto

Assistant Commissioner, Chicago Dept of Cultural Affairs

**VP Finance** Steven K. Takaki

Principal, Takaki, Close & Associates, Ltd.

**VP Membership** Christopher T. Kondo

Senior Recruiter, Quaker Oats Company

**VP Programs** Lynn Oda

Director of Client Services, Hollins Group

**Treasurer** Nancy Yamamoto-Yoshida

Vice President, Diversey-Paulina Building Corporation

**Secretary** Kiyo Yoshimura

Social Worker, Retired

### Board Members

**Jody Oshita Bajor**

Manager of Business Development & Marketing, NBC 5 Chicago

**Kiyoko Kasai Fujiu**

Consultant/Partner, New Dynamics

**Richard Haberkorn**

Marketing Manager, Energy Product Group-Motorola

**Ayanna Hobbs**

Teacher, White Career Academy

**Erika Kono**

Executive Assistant, Japan America Society

**Carol Miyake**

Office Manager, Elmhurst Rehabilitation, S.C.

**Kathryn Kimura Mlsna**

Senior Corporate Attorney, McDonald's Corporation

**Joyce Morimoto**

Director of Technology Programs, National Lekotek Center

**Betty Morita**

Retired

**Chieko Onoda**

Associate Professor, University of Illinois College of Nursing

**Nikki Smith**

Manager, Life Times

**Glenn Sugiyama**

Ad Executive, Leo Burnett U.S.A.

**Sandra Yamate**

President, Polychrome Publishing Corp.

## JASC STAFF

### Administrative Staff

773.275.0097

**Executive Director** Jean M. Fujiu, LCSW

**Assistant Executive Director** Sharon Harada

**Special Events Coordinator/Office Manager** Carol Yoshino

**Controller** Dudley Yatabe

**Systems Coordinator** James Trigueros

**Clerk Typist** Lynn Kaihara

**Receptionist** Sumie Tanimura

**Custodian** Sabah Auodesho

**Clerical Staff** Karen Kanemoto, Lillian Nishimura, Ryan Toguri

### Adult Day Services

773.275.7212 (ext. 39)

**Coordinator** Melba Ristow, RN

**Day Care Nurse** Nanytes (Tess) Cana, RN

**Activity Planners** Esther Cruz, Doris Mason

**Drivers** Givon Hammond (Morning), Doris Mason (Afternoon)

### Home Support Services

773.275.7212 (ext. 28)

**Supervisor** Helen Nakayama

**Homemaker Assistants** Jadwiga K. Czerniejewska, Danuta Knapik,  
Shigeyo Matsuda, Hiroko Smith-Sasaki, Kanako Takeuchi,  
Toshiko Yoshida

### Counseling

773.275.7212 (ext. 25)

**Social Worker** Rina Muraio, LCSW, CADC

### Cultural & Community Affairs

773.275.0097 (ext. 29)

**Coordinator** Sharon Harada

**Cultural & Community Affairs Assistant** Kay Kawaguchi

**Ceramics Instructor** Janette Koga

**Legacy Center (Archives & Library)** Deborah Mieko Burns, CA

**Nutrition** Howard Yahiro

Writer: Karen Kanemoto

Photographer: Kay Kawaguchi

Graphic Designer: Mi Jeong Kim



## Mission Statement

The mission of the Japanese American Service Committee is to provide comprehensive social services such as adult day care, home support care and counseling to the diverse community of the greater Chicagoland area. The JASC is also dedicated to raising awareness and preserving its Japanese American heritage through the presentation of educational and cultural programming.

Founded August 30, 1946, the JASC is a non-profit, 501 (c) (3) social services agency.

Japanese American Service Committee does not discriminate in admission to programs or treatment of employment in programs or activities in compliance with the Illinois Human Rights Act; the U.S. Civil Rights Act; Section 504 of the Rehabilitation Act; the Age Discrimination Act; the Age Discrimination in Employment Act; and the U.S. and Illinois Constitutions. If you feel you have been discriminated against, you have a right to file a complaint. For information, contact the JASC at 773.275.0097.



**J A S C**

4427 N. Clark Street  
Chicago, Illinois 60640

**telephone**

administration 773.275.0097

social services 773.275.7212

**fax**

773.275.0958

**e-mail**

[jascinfo@jasc-chicago.org](mailto:jascinfo@jasc-chicago.org)