

JAPANESE AMERICAN
SERVICE COMMITTEE

1989-90 ANNUAL REPORT

THE QUIET PEOPLE

...a vanishing generation

"The legacy of these gentle, unassuming people is not of vast material wealth nor dramatic achievements acclaimed in the public press, but of enhancing our quality of life with their respect for human values, lived out simply day by day with dignity and spiritual faith and enriching us with their own unique cultural heritage."

— Mary Koga, 1986

静かな人々……消えゆく世代 一世が残してゆく遺産

穏やかで気取らず、謙虚な一世の人々の残してゆく遺産は、巨額の金品でもなければ、新聞紙上を賑わすような業績ではないけれど、人間の価値を尊重し、気品にあふれ、誠実さをもって日々を生き抜くことを身をもって教え、さらに日本文化の伝統を通して後世に不滅の富を残すことで、私たちの生活の向上に大きく貢献したことである。

Pictured on cover:

Masae Watanabe, at age 85—1989 Mary Koga

THE QUIET PEOPLE...

We stand today as witnesses to the indomitable courage of a generation of people who have survived tremendous hardships and are now on the threshold of extinction...the Issei...a vanishing generation of Japanese Americans.

The Japanese American Service Committee, which has served the Issei and those who followed them since 1946, in this 1989-90 Annual Report pays tribute to the remaining Isseis who today are more than 90 years old. Only a handful remain, but their legacy will live on. It is our hope that this Annual Report in whatever small way will remind generations to come of the "quiet people" who "enhanced our quality of life with the respect for human values and lived each day with simplicity and spiritual faith..."

We are indebted to Mary Koga for the forceful portraits of the Isseis taken during the past 20 years. This monument will live in the future as a testament to a generation of people who could not be destroyed—not by hard work, undefinable discrimination or the demand to start anew in the middle of their lives.

The generation structure of the Japanese-American society began around the turn of the century when the Issei began to arrive in

America seeking new lives here. Most of them were in their late teens and early 20s, emerging from a highly stratified, rigidly structured and restrictive feudal society. They established new roots in an alien, and at times hostile environment. They endured back-breaking work as itinerant laborers on the railroads, in lumber mills, fisheries and on farms in the Western States. Most of them achieved a measure of success. The crowning blow to their achievements came with World War II when they were uprooted and transplanted to relocation centers, much better described as concentration camps. The Isseis survived this and most of them, after the war, either returned to the West Coast or sought new homes in cities like Chicago.

This is where the story of JASC begins...The JASC was organized as the influx of Japanese-Americans reached Chicago. Through the pages of this annual report, you will find an accounting of JASC activities. Our achievements, spectacular or not, have continued on a level course...serving our clients to the best of our ability and changing as new needs emerge.

The story is about us...but the real story is that of the Isseis to whom we owe a lot.

...The "QUIET PEOPLE."



Kenichi Morimitsu, at age 101—1987

Mary Koga

PRESIDENT'S MESSAGE

At the June 1990 Annual Meeting of the Japanese American Service Committee (JASC) our agency celebrated its 44th anniversary. Because of the high credibility developed by JASC over the past 44 years, our agency has been duly recognized as an outstanding Midwest area Asian American social service organization by the United Way of Chicago, the Chicago Community Trust, the Mental Health Association of Greater Chicago, and by the various agencies of both State of Illinois and the City of Chicago.

The leadership of the JASC Board of Directors has been enhanced by several early former presidents of the Board, namely Noboru Honda and Thomas Teraji, who are both executive officers of the JASC Nursing Home Committee. We deeply regret the passing of two early presidents, the late Thomas Masuda and Richard Yamada, who played an invaluable role in the growth of JASC over the years.

The Reverend Masaru Nambu, now serving his 26th year with the agency, in addition to his duties as Executive Director, also has been serving as the Project Manager of the JASC Keiro Nursing Home campaign and has been conducting correspondence and meetings with the various nursing home consultants advising the JASC Committee in the difficult legal, technical and financial matters.

Our Long Range Planning Committee, chaired by long-time JASC Board Member Betty Nakanishi, after conducting a survey in our community, has focused as our top priority health care for our JASC members and other people in the community. Several measures are ready to be implemented in response to this need.

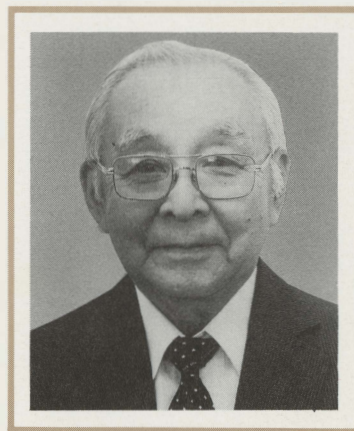
With our highly successful JASC Heiwa Terrace senior citizen retirement home just celebrating its 10th anniversary, we take great pride that our 10-year effort to build the first Asian American nursing home in the Midwest area is becoming a reality. The groundbreaking ceremony for the facility took place on March 24, 1990.

It should be mentioned that major organizations and foundations which provide us with substantial financial support, specify that other Asians, not

just Japanese, should be helped by the JASC and its programs. The JASC facilities have always been open to local organizations for meetings and various functions. For the use of facilities donations are welcomed.

During the past several years, the JASC has received financial support from a number of local organizations, such as the Japanese American Council and members of the Japanese Chamber of Commerce and Industry of Chicago, the Futabakai PTA, and support of many volunteers from organizations such as Nisei Post 1183 American Legion, Japanese American Citizens League, Japanese American Association and church groups, both Christian and Buddhist. We are grateful to the JASC Housing Corporation Board for use of Heiwa Terrace facilities; and the newspaper, radio and television media, including the Chicago Shimpō and its officers and staff members.

We are especially indebted to our JASC Board of Directors who have voluntarily devoted so much of their time and expertise to our agency during the past year. Our community is infinitely richer for their participation.



Arthur T. Morimitsu
1989-90 President
Board of Directors



Hisno Fujimoto, at age 96—1986

Mary Koga

EXECUTIVE DIRECTOR'S REPORT

Throughout FY 1990, the interest of the Japanese American community and the Japanese American Service Committee (JASC) has focused on the JASC Keiro Nursing Home project.

An unprecedented contribution of more than \$1.2 million has been raised from a small Japanese American Community of about 15,000 in metropolitan Chicago. At the nursing home groundbreaking ceremony this spring, an attendance of more than 400 testified to the commitment to the project.

The undertaking has gone through several alterations due to unforeseen changes caused by soil conditions and regulatory requirements. Nevertheless, the Certificate of Need has been obtained from the Illinois Health Facilities Planning Board and we have also obtained a firm commitment from HUD. The JASC Nursing Home Committee has selected Van Kampen Merritt to issue the tax exempt bonds to finance the additional \$8.3 million needed for the construction of the project.

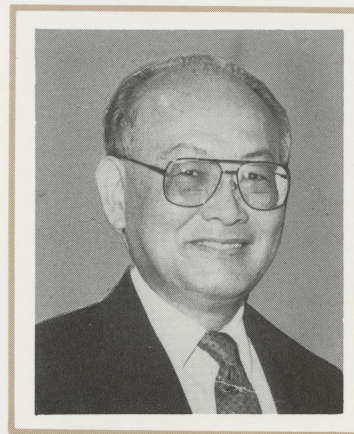
As the Japanese community continues to change and the number of Issei decline, the JASC has been preparing to respond to the changing needs of the community. As a response to the surveys the JASC has conducted in search of the unmet needs, the organization is starting a Community Health Program in cooperation with the Swedish Covenant Hospital. The program is being initiated at seven Japanese churches (two Buddhist Temples and five Protestant Churches) and one station will be located at JASC headquarters. The program will cover health education, health screening, home health care and the necessary referral services to the medical professions.

The aging of the Issei and Nisei population has caused a decline in charitable contributions from our constituents, and the JASC has taken steps to maintain sound financial support needed for the continuation of its services. With the endorsements of the Consulate General of Japan, and the Japanese Chamber of Commerce and Industry, the JASC has initiated a Corporate Membership Drive from Japanese companies and more than 30 companies have joined the Corporate membership in

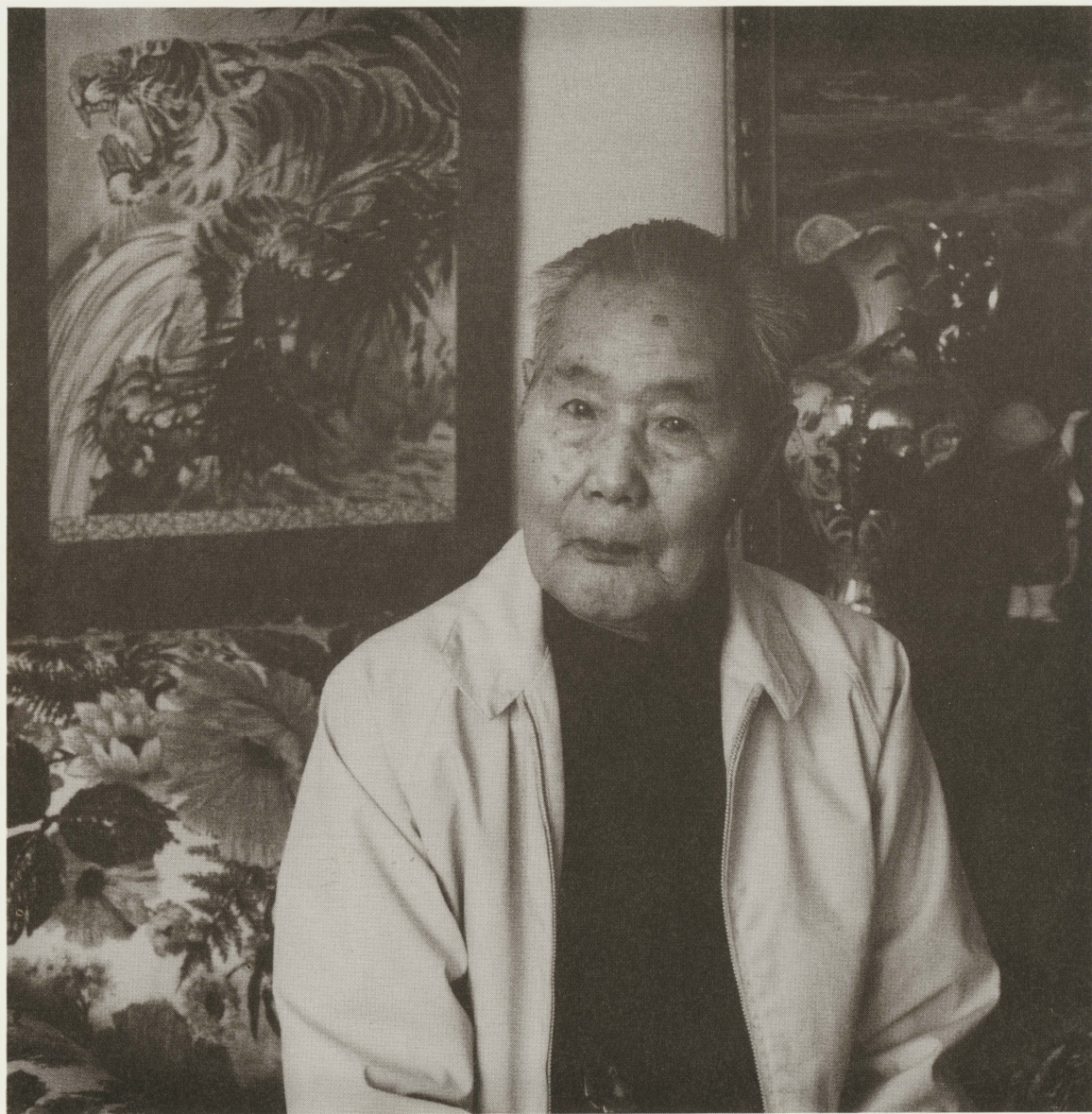
support of JASC. We hope that additional Japanese companies will join our membership in the years to come.

It is amazing as we reflect on our past 44 years to realize that being aware of the pressing needs of the Japanese community and with little assistance, a small self-help organization was created and that out of these humble beginnings an organization developed which left a lasting impact on many lives.

New leadership is emerging from young Japanese Americans—Sansei—on the JASC Board of Directors. As the JASC forges forward on an uncharted future course, I am confident that collective wisdom of the JASC Board and the community leaders will continue to guide the course of the JASC and continue to make valuable contributions toward improving the quality of life of the people we serve.



Masaru Nambu
Executive Director



Yoshiji Sahara, at age 86—1986

Mary Koga

SERVICES WE OFFER OUR CLIENTS

The Japanese American Service Committee through the years has factored its programs to serve the changing needs of our client community. There were services for the Isseis, such as the discontinued sheltered workshop. Adult day care which is much needed now will probably be discontinued in a few years as the Isseis cease to exist and the Niseis are not quite ready for this service. The JASC today concentrates on services for the Niseis. Their health and what we can do to maintain and improve it, is high on our agenda.

As we open the Pandora's box and attempt to steal a glimpse of the social ills of the future, we have to anticipate the role the Sansei's (third generation Japanese Americans) will play in our organization. We hope that there will be a time when we will be able to determine their needs and provide some services to this generation. The areas of maintaining their cultural heritage and introducing their children to it, loom big at the present time.

In retrospect, the FY 1989-90 has been a productive one for JASC.

What have we accomplished?

We have continued our existing programs and proved our ability to serve our community when it needs us.

Our **ADULT DAY CARE** program last year served approximately 25 clients per day, totaling 31,674 hours of service. Adult Day Care aims to keep the elderly out of institutions and offers activities in a group setting which help older adults to improve their physical and mental condition. Clients participate in a number of activities and special events, such as field trips, ceramics, exercise and hear speakers on various subjects. They also get a noon meal and have the opportunity to eat together with others.

Social service and nursing staffs develop individual plans for each client and monitor their progress.

CASEWORK AND COUNSELING services in the past fiscal year worked with 243 clients, 201 of Japanese American ancestry. The total hours of service provided were 2,938. This is a program which assists clients to achieve adequate psychological and social life. The counselor speaks Japanese and deals with questions involving financial and health issues as well as formulating future plans for the elderly.

HOME SUPPORT services involve cleaning, shopping, laundry, food preparation, personal care, nutritional service and hygiene education to the elderly either at Heiwa Terrace, a senior citizen's residential center or at other locations. This service has one aim... to help the elderly live independently and avoid institutionalization.

During the past year, the chore housekeepers provided a total of 18,351 hours of service to 126 clients...79 of them Japanese Americans.

GROUP SERVICES is a program which provides educational classes, mature driving, tai chi (oriental exercise), minyo (folk music and dance), penji (penmanship), origami (paper folding) and kaminogyo (paper doll construction.)

Special Japanese festivals are observed and presented as authentically as possible. Programs dealing with health and education are offered by this division as is a nutrition and Meals-on-Wheels services to home-bound elderly. The nutrition program served more than 10,500 meals through last year and Group Services offered duplicated services to nearly 3,200 people.

HIGHLIGHTS OF 1989-1990

The past fiscal year featured a number of achievements, several of them of major importance to our organization.

Topping the list was the long-awaited groundbreaking for the JASC Keiro Nursing Home which took place on March 24 and was the first major step toward the completion of the \$8.3 million facility.

The weather cooperated as sunny skies greeted the 400 plus attendees at the ceremony which was culminated in a reception which followed addresses by dignitaries and a photo "groundbreaking" session on the nursing home site.

The event was another milestone in the 10-year effort to build the first Japanese American Nursing Home west of the Mississippi. It celebrated, among other things, the \$1.3 million raised among the Japanese American community toward the home construction.

During the past fiscal year, JASC also obtained a "Certificate of Need" from the state for the project. This is a step needed before tax-exempt revenue bonds can be sold and construction started.

A new service program was launched by JASC. In a joint venture with the Swedish Covenant Hospital, our organization formulated a Community Health Program. It is fashioned after the hospital's "parish nurse" program and will be aimed at our Issei and Nisei population, concentrating on individuals who need specialized or comprehensive health services, but for whom care in hospitals, outpatient clinics, or in the offices of private practitioners is unnecessary.

The nurse, working in close conjunction with JASC, will help the community to recognize the needed elements for its overall health and well being and will be available to advise on health education, health screening program and provide personal counseling within the limits of the nurse's role. Other duties of the nurse will include the employment of community health resources for the benefit of the community and assisting in-



Keiro Nursing Home Groundbreaking



Annual Market Day



Fuji Festival



Christmas Delight Sale

dividuals in the community with nursing services.

A number of special events also highlighted the year. These included the Fuji Festival which honored Frank Sugano, chairman of the Sugano Travel Agency and President of Chicago Shimpo; the Christmas Delight Sale, annual Market Day and others. These activities help us to raise funds needed to provide services to our clients.

Finally, JASC last fiscal year developed a new membership category. We started to sell \$1,000 membership shares in our organization to Japanese companies which do business in Chicago area. Thirty-one companies responded and to them go our appreciation and thanks. A list of these new members follows:

C. Itoh & Co. (America) Inc.
 CKD Createc Corp.
 Echo, Inc.
 Fuji Photo Film
 U.S.A., Inc.
 Fuji America Corp.
 Honda & Associates, Inc.
 Japan Airlines Co.
 KGK International Corp.
 Kikkoman Foods, Inc.
 Komori America Corp.
 KPMG Peat Marwick
 Kyowa Industrial Co., Ltd., USA
 Marubeni America Corp.
 Matsushita Electric Corp. of America
 Mhotronics, Inc.
 Mitsubishi International Corp.
 Mitsui & Co. (USA) Inc.
 N.Y.K. Line (North America) Inc.
 Nichicon (America) Corp.
 Nippon Express USA, Inc.
 Nissei Sangyo America, Ltd.
 Nissho Iwai American Corporation
 NSK - Corp.
 NTN Elgin Corp.
 OSG Tap & Die, Inc.
 Sankyu USA Inc.
 Sumitomo Electric Carbide, Inc.
 Sumitomo Corporation of America
 The Industrial Bank of Japan, Ltd.
 Toko America, Inc.
 YKK (U.S.A.) Inc.



Hatsu Matsunaga, at age 87—1986

Mary Koga

1989-90 MEMBERS OF THE JASC

The Japanese American Service Committee gratefully acknowledges contributions received during the Fiscal Year July 1989 through June 30, 1990. The generosity and support of such gifts is appreciated by all who are served by this agency, and donors are listed in periodic JASC publications.

- Abe, Amy
 Abe, M/M Koki
 Abe, Shoji
 Aberer, M/M Joseph C.
 Aburano, M/M Kiyoharu
 Adachi, M/M Bill U.
 Adaniya, Yoshiko
 Agemura, Saki
 Aki, M/M Harvey
 Akinaga, Shizume
 Akiyama, Joe
 Allen, M/M Dean E.
 Amano, Toshiko
 America NTN. Bearing Mfg. Corp.
 Amimoto, M/M Minoru
 Amino, M/M Yosh
 Anderson, Russell F.
 Aoki, Hiro
 Aoki, M/M Toru
 Aragaki, M/M Herbert
 Arai, Akira
 Arai, Dr. & Mrs. Harold
 Arai, M/M Tadashi
 Arai, Tom T.
 Arakaki, M/M Charles Y.
 Arakaki, M/M Yusuke
 Arakawa, Misao
 Arakawa, M/M Paul T.
 Arao, M/M Hideaki
 Aruguete, Dr. Christine M.
 Asa, M/M Takeru
 Asa, Toshi
 Asahara, M/M Naoto
 Asahina, Renzo
 Asai, Maomi
 Asai, Yuki
 Asaki, M/M Roy H.
 Asakura, George K.
 Asakura, June
 Asakura, Memi
 Asakura, M/M Richard
 Asato, Noboru
 Ase, M/M Paul
 Azuma, Alyse
 Azuma, Masahiro
 Azuma, M/M Steven Y.
- Babin, M/M Fred
- Chan, M/M Gat Tung
 Chan, Virginia
 Chang, Teng H.
 Chen, Hong K.
- Chen, Tuan-Mey
 Cheng, Mary Wen
 Chikaraishi, Dr./M Ben
 Clark, Emi
 Coble, Ed S.
 Coker, Dolores R.
- Delcore, Terry J.
 Dodojara, Takashi
 Doi, Asao
 Doi, M/M Isamu
 Doi, Mikio
 Doi, M/M Paul K.
 Domoto, Mo
 Domoto, Tazu
- Ebisu, Yukiko
 Eldridge, Marjorie E.
 Endo, Asako
 Endo, M/M Harry
 Endo, Nellie
 Endo, Reiko
 Endo, Shima
 Endo, M/M Tomy
 Enta, M/M Lindy T.
 Esaki, Susie S.
 Ezaki, M/M James
- Falls, Dr/M Arthur G.
 Findlay, Evelyn
 Fricke, M/M Robert
 Friedman, Hideko T.
 Fugami, M/M Paul M.
 Fujii, M/M George H.
 Fujii, Kazuko
 Fujii, M/M Leith Y.
 Fujii, M/M Masao
 Fujii, Mickey
 Fujii, Mitsuko
 Fujii, Tomiye
 Fujikawa, Tsui
 Fujimori, M/M Glenn Y.
 Fujimoto, Benjamin
 Fujimoto, Jane S.
 Fujimoto, Laurie Lynn
 Fujimoto, M.C.-Hirai, R.
 Fujimoto, Martin H.
 Fujimoto, Mike S.
 Fujimoto, M/M Ralph H.
 Fujimoto, S.
 Fujioka, Mariko
 Fujishima, M/M Mitsuo
 Fujita, M/M Charles K.
- Fujiura, M/M Henry H.
 Fujiwara, M/M Tio T.
 Fukai, M/M Stanley Y.
 Fukami, M/M Frank
 Fukami, M. Family
 Fukawa, M/M Shoji
 Fukuchi, M/M Min
 Fukuda, M/M Harry
 Fukuda, M/M Makoto
 Fukui, M/M Henry
 Fukunaga, Roy
 Fukushima, Hideo
 Fukuya, M/M Kazuo
 Fukuyama, M/M Dick K.
 Furukawa, M/M Hiroshi
 Furukawa, Roy H.
 Furukawa, Roy S.
 Furuta, Tsugi
 Furujama, William
- Goi, M/M Mitsuo
 Gokan, M/M Donald
 Goss, M/M Richard H.
 Grossman, Ruth E.
 Guibor, Helen Y.
- Hachiya, James
 Hachiya, M/M Tomoharu
 Hagio, M/M Allan I.
 Hama, Namio
 Hamada, George
 Hamada, Lillian
 Hamano, Robert K.
 Hanamoto, M/M Henry
 Hanano, Charles
 Hara, M/M Colin
 Harada, Dr/M Masaru
 Harada, M/M Yoshiro
 Harano, M/M Masashi
 Harano, Ross
 Hasegawa, Betty F.
 Hasegawa, Dr/M Junji
 Hasegawa, Shigemi
 Hashimoto, Edward T.
 Hashimoto, M/M George
 Hashimoto, Roy M.
 Hashimoto, M/M Shigeru
 Hashimoto, Toyoko
 Hashioka, M/M Roy M.
 Hashisaka, Misayo
 Hatanaka, M/M Howard
 Hattori, M/M Kenneth
 Hattori, M/M Mike
- Hattori, Miyoko
 Hawkins, Jo Ann M.
 Hayano, Lillian K.
 Hayashi, M/M Tom
 Hayashida, M/M Satoshi
 Henmi, M/M Gerald
 Higashi, M/M Ed
 Higashiuchi, M/M K.
 Hikawa, M/M Richard
 Hikida, Sadako
 Hikido, Janet
 Hikido, Olga
 Hirabayashi, Joe H.
 Hirai, Toyoko
 Hirakawa, M/M James K.
 Hirakawa, Louis S.
 Hiramatsu, Sadakazu
 Hirami, M/M Maki
 Hiraoka, M/M Sadayuki
 Hirata, Dr/M George T.
 Hirata, Kotoku
 Hirata, Meri
 Hirata, Merry
 Hiratsuka, M/M Frank
 Hirota, Tadao
 Hogan, Hannah
 Hogan, Mari
 Honda, Eugene T.
 Honda, M/M Noboru
 Honda, Shizuko
 Honda, M/M Thomas
 Hori, M/M Fukashi
 Hori, M/M H. E.
 Horita, M/M Shigeo
 Horita, M/M Shoji
 Hoshiga, Yuriko
 Hosokawa, M/M George
 Hosokawa, M/M Kiyoshi
 Hotoda, Sachiko
 Huang, Dr. Teng Liang
- Ichiba, M/M George
 Ichiba, William Y.
 Ichihashi, M/M Woodrow T.
 Ichikawa, Alice Y.
 Ichikawa, M/M Takaaki
 Ideno, M/M Gene K.
 Igarashi, M/M Peter H.
 Igasaki, David K.
 Iha, Kiyo
 Ii, M/M Kenji
 Iida, Miyako
 Iijima, En

Iino, M/M Tomonao
Ijichi, M/M Kent
Ikeda, Glenn
Ikeda, Hana
Ikeda, Kohei
Ikegami, M/M Yukio
Ikemoto, Gus
Ikezo, Lillian
Ikoma, Shikibu
Ikoma, M/M Sumio
Ikoma, Yoshiko
Imamura, M/M Minoru
Imanaka, M/M James
Imanaka-Chin, Esther
Imaoka, M/M Ralph
Imon, M/M Muneo R.
Inouye, M/M Chikateru
Inouye, M/M George W.
Inouye, Dr./M Henry S.
Inouye, Masako
Inouye, Okiye
Inouye, M/M Shinn
Iseri, M/M Alexander
Ishibashi, Cecilia T.
Ishida, Calvin
Ishida, M/M George T.
Ishida, M/M John M.
Ishida, Julius
Ishida, Mas
Ishii, Marion
Ishii, M/M Yasuo
Ishikawa, Gerald K.
Ishizaki, Mitsuye
Ishizuka, M/M Tadayoshi
Isoda, M/M Seishi J.
Itano, M/M Masashi
Itano, M/M Tak
Itano, M/M Yutaka
Ito, M/M George T.
Ito, M/M Henry K.
Ito, Hiroshi
Ito, John
Ito, Ken Y.
Ito, Lois K.
Ito, M/M Shigeo
Ito, M/M Sumio
Ito, M/M Tom
Ito, Valerie
Itoku, M/M Ken
Itow, Yoshiye G.
Iwafuchi, M/M Kingo
Iwami, M/M Akira D.
Iwami, Ruth N.
Iwamuro, Yae
Iwana, Fumiye
Iwanaga, M/M Michael Y.
Iwaoka, M/M Joe

Iwaoka, May
Iwaoka, Mrs. Sam
Iwata, M/M Roy
Iwatsuki, Fumiko
Izui, M/M George K.
Izui, M/M Richard
Izul, Dr/M Victor
Izumi, Miyako
Izuo, Peter Y.

Johnson, Rev./M William G.
Joichi, M/M Rowland
Joji, M/M Toshio
Juta, Roy

Kabumoto, M/M Jack
Kadonaga, M/M Yuwao
Kadota, Dr/M Paul
Kadowaki, Ken
Kadowaki, M/M Paul H.
Kadowaki, Tsuruo
Kadoyama, M/M George
Kahl, Edward C.
Kaiharu, M/M Thomas K.
Kaiharu, Dr./M Wesley T.
Kaihatsu, Edward J.
Kaihatsu, Rose
Kajikawa, Frank
Kajiwara, M/M Edward I.
Kakazu, Takashi
Kakita, Chizuko
Kambara, Dr/M Andrew A.
Kambara, M/M Frank T.
Kamiya, M/M Benjamin
Kamo, M/M Haruo
Kamo, Richard
Kanaya, M/M Enoch
Kaneko, M/M Hiroshi
Kaneko, Merle
Kanemoto, Neil Y.
Kaneshiro, M/M Darrell
Kaneshiro, M/M Stanley H.
Kanii, Chizuko
Kanki, Minoru
Kano, Sachiko
Kariyomi, Henry M.
Kariya, M/M Takio
Kasai, M/M Tosh
Kasamoto, M/M Nao
Kashihara, M/M George
Kashima, Rin
Kasuya, Masanori
Katagiri, Hama
Katahira, M/M George
Kataura, M/M George
Katayama, Jerry J.
Kato, Betty A.

Kato, M/M Gunpei
Kato, M/M Harry
Kato, Haruye
Kato, M/M Paul K.
Katsuda, Yoshiko
Katsuyama, M/M Fred M.
Kawabata, M/M Hideo
Kawaguchi, M/M George
Kawaguchi, Hisaye
Kawaguchi, M/M Motohiro
Kawaguchi, Sen
Kawaguchi, Takashi
Kawaguchi, Yoko
Kawaguchi, M/M Yoshio F.
Kawahara, James T.
Kawakami, M/M Jack
Kawakami, M/M Kenji
Kawamoto, Kaz F.
Kawamoto, Kikuye
Kawamoto, Lynne
Kawamoto, Mitsugi
Kawamoto, M/M Morris
Kawamoto, Sally H.
Kawamura, M/M Mac
Kawanaga, Dr/M Henry
Kawano, Jim
Kawano, M/M John
Kawano, Linda S.
Kawano, M/M Minoru F.
Kawasaki, M/M George
Kawasaki, M/M Norimasa
Kawashima, M/M Richard
Kawashima, Toshiko
Kay, Nobu K.
Kayano, M/M Ray S.
Kebo, Evelyn
Kido, M/M George
Kikuchi, M/M Katsumi
Kikuchi, Robert A.
Kikuchi, Toshiko
Kikuta, M/M Noboru
Kim, M/M Raymond
Kimura, M/M George M.
Kimura, James H.
Kimura, M/M Kenneth K.
Kimura, Lillian C.
Kimura, M/M Lloyd
Kimura, Mary S.
Kimura, Mina & Waka
Kimura, M/M Paul S.
Kimura, Tad J.
Kimura, Yoshi
Kinishi, M/M Toshiro
Kinoshita, George
Kita, M/M Carl
Kitabayashi, Helen H.
Kitahata, Paula

Kitazaki, M/M John W.
Kitazaki, M/M John Y.
Kitazaki, Mixie
Kitazumi, Marie
Kitsuse, M/M Nelson
Kittaka, Dr/M George
Kittaka, Kumako
Kobata, M/M Masanobu
Kobayashi, M/M Isamu
Kobayashi, Katsuyoshi
Kobayashi, Sumi
Kobayashi, M/M Yuji
Kodama, M/M Mitsuo
Kodama, M/M Ted A.
Kodani, M/M Michael
Koga, M/M Albert M.
Koga, Henry
Koga, Joseph S.
Koizumi, M/M Seichi
Koizumi, M/M Tom T.
Kojima, M/M Susumu
Konagimitsu, M/M Kiko
Kondo, M/M Raymond I.
Kono Kozui
Koyanagi, M/M Haruto
Kraus, M/M Pavel
Kreamelmeyer, Jean M.
Krueger, Marion
Kubo, Robert S.
Kubose, Rev/M Gyomay
Kubose, Rev./M Sunnan
Kubota, Masao B.
Kubota, Ryo
Kuchii, Keiji
Kudo, Shigeru
Kuki, Yoko
Kumamoto, Dr. David P.
Kumamoto, Dr/M Koki
Kumasaka, M/M Haruo
Kumata, Misao
Kumata, Ruth K.
Kunita, Sadie M.
Kuo, Fung
Kuramitsu, M/M Howie
Kuramoto, M/M Tamotsu
Kuranishi, M/M Tom
Kurusu, Elaine
Kuroiwa, M/M Haruki
Kurokawa, M/M Stanley S.
Kurotsuchi, Dr/M Roy Y.
Kuroye, Roy M.
Kusayanagi, Hiroko
Kusayanagi, M/M Stanley
Kuse, M/M Isamu
Kuse, Lily N.
Kushi, M/M Shigeru
Kushino, Yurie

Kusumoto, Shoji
Kuwahara, M/M Harry
Kuwashima, M/M Hiroshi
Kuzuhara, Rev/M Chiaki
Kuzuhara, Ikue

LaFleur, Ann
Lee, M/M Samson
Lee, M/M Yeon Woong
Lehrman, M/M Nat
Lin, Vivian
Lin, Ying Ming
Lofton, M/M Nathan

Maeda, M/M Richard S.
Maeda-Janka, Ellen
Maeshiba, Elizabeth M.
Mah, Hisae
Makino, Martha
Makino, Rose H.
Makino, William
Mansho, Calvin K.
Marden, Julie I.
Marubeni America Corp.
Maruyama, M/M George
Maruyama, M/M Henry
Masada, Alice A.
Masamitsu, William
Masuda, Kikuye
Masumoto, M/M Hiromu
Matayoshi, M/M Rocky
Matsuda, M/M Paul
Matsui M/M Ben S.
Matsui, M/M Tak
Matsumoto, M/M Frank Y.
Matsumoto, Dr/M George
Matsumoto, M/M Katsuo
Matsumoto, M/M Kimitsu
Matsumoto, Mary
Matsumoto, M/M Shig
Matsumoto, M/M Shinro
Matsumoto, Tom
Matsumoto, Yoshinobu
Matsunobu, Hisashi
Matsuo, Yo
Matsuoka, Fusa H.
Matsushima, M/M Tomomi
Matsushita, M/M Akira
Matsushita, Masaru
Matsutani, M/M Hisashi
Matsuda, M/M John
Matsuura, M/M George
Matsuzaki, Hiroshi
Matza, M/M Robert
Mayahara, M/M Thomas
Mayeda, Gene H.
Mayeda, M/M Harry K.

Mayeda, M/M Hiro
Mayeshiba, M/M Andrew J.
Mazawa, Shigemi
McGlone, M/M Earl
Medlin, M/M Larry
Menda, M/M Masao
Migaki, M/M Joe
Miller, Dr/M Edwin
Minato, Asao
Mine, M/M Jumpei
Mito, Paul
Mitsubishi-Heavy Ind. America, Inc.
Miwa, I. Ted
Miyagawa, M/M George H.
Miyagi, Dr. Norman S.
Miyakawa, M/M R. H.
Miyakawa, M/M Sotaro
Miyake, M/M Abe
Miyake, Andy
Miyake, Gregory
Miyake, M/M Hiroshi
Miyake, M/M Jack S.
Miyake, M/M Joe
Miyake, Ryoichi
Miyao, Nancy
Miyashiro, Jean M.
Miyashita, M/M Mikio
Miyashita, T. Edward
Miyata, Misu
Miyata, M/M Victor
Miyazaki, M/M Shu
Mizuki, Takashi
Mizuno, M/M Kashiro
Mizuno, M/M Ted S.
Mizuta, Yukinao
Mizuuchi, M/M Yasuo
Mori, June K.
Mori, Yoshiko
Morikawa, M/M George
Moriki, M/M Tsuneo
Morimitsu, M/M Arthur T.
Morimitsu, F.K.
Morimitsu, M/M George W.
Morimoto, Dr. Paul
Morimoto, M/M Thomas I.
Morimoto, M/M Todd
Morioka, Judy
Morishige, George
Morishita, M/M Ray J.
Morita, James S.
Morita, Masano
Morita, M/M Mototsugu M., Jr.
Morita, M/M Paul
Morita, Roy S.
Motoike, M/M Hideo
Motoki, Seiichi
Motomura, Tomiko

Motooka, M/M Moss
Mouri, M/M S.
Mukai, Chiyoko
Mukai, M/M George K.
Mukoyama, Major General/M James H., Jr.
Mukushina, Tamako
Munemoto, M/M Hatsuichi
Munemoto, Kosumi
Mura, M/M Tom K.
Murai, M/M Katsumi
Murakami, Dr./M Glenn
Murakami, Rev. Ken
Muramoto, Mary
Murao, M/M Shig
Murata, Yoshinori

Nagai, M/M Tay
Nagaoka, Aki
Nagaoka, Setsuko
Nagaro, Fred M.
Nagasawa, Risaku
Nagata, M/M Robert S.
Nagata, Suehiro
Nagatani, Eunice
Nagatomo, Lauretta M.
Naito, M/M Tony
Nakachi, Mitsue
Nakada, M/M Pershing
Nakagawa, M/M Aki
Nakagawa, Bill
Nakagawa, Ruby
Nakagawa, M/M Shunichi
Nakagawa, Tsune S.
Nakagawa, Yoshio
Nakaguchi, Midori
Nakamoto, M/M Gray
Nakamoto, Hisako
Nakamoto, Keith I.
Nakamoto, Tokumasa
Nakamura, Akira
Nakamura, Atsuyo
Nakamura, Carolyn K.
Nakamura, Chiyo
Nakamura, Fujiye
Nakamura, Fumi
Nakamura, H. Henry
Nakamura, Karl K.
Nakamura, Kay
Nakamura, Mark
Nakamura, Noboru
Nakamura, M/M Robert W.
Nakamura, Sada
Nakamura, M/M Takeshi
Nakamura, Teru
Nakamura, Tsuruko
Nakamura, Uji
Nakane, Aiko
Nakanishi, George
Nakanishi M/M Toshio
Nakano, Maye
Nakao, M/M George K.
Nakao, M/M Sam I.
Nakashima, M/M Kats
Nakashima, M/M Sam
Nakata, Betty
Nakata, M/M Sho J.
Nakaya, Tsuneko
Nakayama, M/M Jim S.
Nakayama, Dr/M Joe
Nakayama, M/M Masao
Nakayama, Patricia M.
Nakayama, Wayne N.
Nakayama, Yoshino
Nakazawa, M/M Roy
Nakazawa, M/M T. G.
Nambu, Jonathan
Nambu, M/M Masaru
Nambu, M/M Yoichiro
Narimatsu, Jean S.
Nasu, Mieke
Neeno, Dr./M Katsumi
Neeno, Tsuneko
Nemoto, Elaine
Nishi, Grace
Nishi, M. C.-Konishi, A.
Nishibayashi, Amy
Nishida, Yoshiye K.
Nishihira, M/M Mori
Nishijima, M/M Satoshi
Nishimoto, Kiyoto
Nishimoto, Tim
Nishimura, Arthur M.
Nishimura, M/M Francis A.
Nishimura, Greg
Nishimura, M/M Ken G.
Nishimura, Maria
Nishimura, M/M Masaki
Nishimura, M/M Mizuo
Nishimura, M/M Tosh
Nishimura, Toyoko
Nishimura, Unokichi
Nishio, M/M Johnny K.
Nishioka, Nancy
Nishiura, M/M Jerry
Noguchi, Takao
Noma, Keiko
Noma, M/M Toshio
Nomiya, Takeko A.
Nomoto, M/M Taro
Nomura, David R.
Nomura, Masa
Nordstrom, M/M Donald
Nosaka, M/M Fred K.
Nozaki, Barney

Nozaki, Tomi
Nozawa, John H.
Numata, M/M James S.

Oba, George
Obata, Miyoko
Ochi, M/M Hisashi
Ochiai, M/M Takeshi
Oda, Dick R.
Oda, June
Oda, Molly
Odanaka, M/M Fred
Odoi, Sue
Ogasawara, M/M Minoru
Ogata, Joe H.
Ogawa, Linda M.
Ogawa, Shoji
Ogawa, M/M Shu
Ogi, M/M Robert E.
Ogura, Donna
Ohama, Alyce A.
Ohba, M/M Shunjiro
Ohi, M/M Fred K.
Ohno, M/M Haruyoshi
Ohno, Tetsuko N.
Okabe, Thomas S.
Okada, Yoshiko
Okada, Yukiko
Okamoto, Hana
Okamoto, Kiyoshi C.
Okamoto, Masano
Okamoto, Mitsuno
Okamoto, M/M Tadashi
Okamoto, M/M Thomas
Okamoto, M/M William
Okamura, M/M Henry K.
Okawa, Nobuko I.
Okayama, Marion A.
Okigawa, Kazuichi
Okimoto, Kiyoko
Okimura, Hatsy H.
Okita, Frank T.
Okita, M/M George T.
Oku, M/M George
Okutomi, Yumi & Noriko
Omachi, M/M Akira
Omi, M/M Fred T.
Omori, Dr/M Harry I.
Omori, Hatsuko
Omori, Dr./M John T.
Omuro, Bette S.
One, M/M Dick
Ono, M/M Hiroshi H.
Ono, M/M Mits
Ono, M/M Mitsuo H.
Onoda, M/M Hideo S.
Osakada, M/M Gordon

Oshiro, M/M Robert K.
Oshiro, M/M Shoichi
Oshiro, M/M Wallace
Oshita, Kai G.
Oshita, Thomas
Oshita, M/M Yutaka
Ostermann, Tsue A.
Otaka, Marie
Otaka, Sandra R.
Otake, Paul M.
Otsubo, Katherine
Ouchi, M/M James
Oya, George
Oya, Merry Y.
Oyama, M/M Peter I.
Oyama, Toshiko
Ozaki, M/M Henry K.
Ozaki, Kiyono
Ozaki, Masato
Ozaki, M/M Sam
Ozaki, M/M Yoji
Ozawa, M/M George
Ozawa, M/M Thomas S.
Ozeki, M/M Ken
Ozima, Karl T.
Ozone, Yoshiko

Paulsen, M/M Eugene H.
Photiades, Margaret T.
Proctor, M/M Stephen M.
Prosise, Lucille
Pultorak, Janet

Rubinstein, M/M George A.

Sabusawa, Harry
Saiki, M/M George
Saiki, M/M Hideo
Saito, M/M Frank M.
Sakaguchi, Katsumi N.
Sakai, Gingo
Sakai, M/M Henry K.
Sakai, M/M Isamu
Sakai, M/M Jack
Sakai, M/M Yoshitaro
Sakamoto, M/M Jim T.
Sakamoto, M/M Jiro
Sakamoto, Wayne T.
Sakata, M/M Mitsuo
Sakauye, M/M John
Saks, K. Kincaid
Sakuma, Rev./M H.T.
Sakurada, Hirao S.
Sakurai, M/M Robert Y.
Sasaki, Asako
Sasaki, M/M Eddie
Sasaki, M/M Eli

Sasaki, M/M John
Sasaki, Mas
Sasaki, Robert M.
Sasaki, Willy K.
Sasamura, Misaki
Sata, Richard T.
Sato, Joseph
Sato, M/M Kay M.
Sato M/M Ken
Sato, M/M Michael K.
Sato, Riyo
Sato, M/M Sam
Satoh, Rev/M Kei
Sawada, Henry
Schechtman, M/M L.D.
Senda, M/M Kane
Seo, Hisako
Sera, M/M Shunso
Serikaku, Stanley S.
Seto, M/M James
Shiba, Fumiko
Shieh, Chi-Lin
Shigehira, Natsuko
Shigehira, Tatsuyo
Shigihara, M/M Hiroshi
Shikami, Barbara
Shima, Dr./M Arthur T.
Shimabukuro, Kiyoko
Shimasaki, M/M Sam
Shimashita, M/M Joe
Shimazaki, Reiko
Shimizu, Michie
Shimizu, Momoe
Shimizu, Sumi
Shimoda, Osawa K.
Shimoda, M/M Sam I.
Shimajima, Tomi
Shimokubo, Tsugi
Shimotake, Hiroshi
Shinagawa, M/M Howard
Shinsako, M/M Shiro
Shintaku, M/M Clark
Shintani, Yoneko
Shiohara, Elsie
Shiohara, Nobuko
Shiomoto, Tokumi
Shiozaki, M/M M.
Shiozaki, Ruth
Shiozaki, M/M Takashi
Shiozaki, Ted
Shiraiwa, Seichi
Shirakawabe, Ben
Shirakawabe, M/M Henry H.
Shirataki, Kiyohohiko
Shiratsuki, M/M Misao
Shiratsuki, Sumiko
Shiroma, Howard

Shishido, M/M Melvyn T.
Shoda, Glenn M.
Soda, M/M Ken
Sonoda, M/M Jeff
Sonoda, M/M Kiyoshi
Sonoda, Mary T.
Soraoka, Akira
Sori, M/M Masaru
Suda, Toshio
Suga, M/M Shigeo
Sugano, Ann
Sugeno, Toyo
Sugimoto, Midori
Sugiura, M/M Go
Sugiyama, M/M Shojiro
Sumi, Fusaye
Sumi, M/M Joseph K.
Sumi, Sandra S.
Sumida, Joan
Sumida, M/M William K.
Sunada, Hideo
Sunahara, M/M Glen
Sunahara, M/M Kay
Suyeeoka, Kaoru
Suzuki, M/M George Y.
Suzuki M/M Hiroshi
Suzuki, Joseph K.
Suzuki, Kin
Suzuki, Mabel I.
Suzuki, Namiye
Suzuki, Ruth
Suzuki, Sakari
Suzukida, Berry
Suzukida, M/M Henry A.
Szathmary, M/M Louis

Tadamaru, M/M Harry Y.
Tado, Satoshi
Tagami, Edward C.
Tagami, M/M Kay
Taguchi, M/M Tooru
Tahara, Jean S.
Tajiri, Maile
Takagi, Aiko
Takagi, Yoshiko
Takagishi, Kay
Takahashi, M/M George
Takahashi, Yataro
Takaki, M/M Kaoru J.
Takaki, M/M Kenichi J.
Takaki, Mary
Takaki, M/M Michael K.
Takaki, Richard K.
Takami, Hisako
Takami, Robert
Takami, Yone
Takamoto, Michiko

Takamoto, M/M Naoto
Takamoto, Oriyo
Takano, Yukiko
Takaoka, M/M Ken
Takarada, Julia
Takato, M/M John J.
Takayama, Dr/M Masami
Takehara, Ei
Takehara, M/M Ichiro
Takehara, Dr/M Joe
Takehiro, Kotomi
Takei, Arthur K.
Takemoto, M/M George S.
Takemoto, M/M John
Takeshita, Esther
Takeshita, Goro
Taketa, M/M Jun
Taketoshi, Chiyo
Taketoshi, George
Takeuchi, M/M Noboru J.
Taki, George
Taki, William, Sr.
Tamada, M/M Kay
Tamashiro, M.
Tamura, Ken
Tamura, Ralph K.
Tamura, M/M Seizo
Tanabe, M/M Osamu
Tanabe, M/M Yoshio
Tanaka, Frank
Tanaka, Ganji G.
Tanaka, M/M George H.
Tanaka, M/M James
Tanaka, Judith
Tanaka, M/M Masao
Tanaka, Mitsuye
Tanaka, Sab
Tanaka, M/M Shigeo
Tanaka, M/M Tadao
Tanaka, Virginia M.
Tanaka, M/M Yoshitaka
Tanakatsubo, Dr. Ramsey
Tanakatsubo, M/M Sats F.
Tando, M/M Norman
Tani, Benjamin S.
Tani, Joyce S.
Tani, Kenji
Tani, Richard M.
Tanigawa, M/M Hitoshi
Tanii, May
Tanimura, M/M Ted
Tanino, M/M Coolidge
Tanizawa, M/M Tom T.
Tanouye, Toshi
Tashiro, M/M Goji
Tatsumi, M/M Yasuo
Taura, Joe

Taura, M/M Masayasu B.
Tay, Soo Hong
Terada, Laura F.
Terada, Yoshiko
Teraji, M/M Thomas S.
Teraoka, M/M George
Terusaki, M/M Ben H.
Teshima, Dr/M Roy
Thompson, William A.
Toba, M/M Mitsuru
Toguri, Iva I.
Tohei, M/M Akira
Tokimoto, Hideo J.
Tokuhisa, M/M Thomas S.
Tokunaga, Nobuo
Tomihiro, Chiye
Tomita, M/M Harold
Tomita, M/M Joe
Tomiyama, Fumiko
Tomomatsu, Dr. Hideo
Tonaki, Kazuko
Torigo, M/M Ben
Torii, M/M Charles S.
Toyama, M/M Henry I.
Toyama, M/M Hiro
Tsuchiyama, Joe
Tsugawa, M/M Tom T.
Tsuji, Mito
Tsukinari, M/M Mas
Tsunehara, Harold
Tsunehara, Ichiro
Tsunemura, Kaz
Tsuneta, Chizuko
Tsurusaki, M/M Chikaji
Tsurutani, M/M Daniel
Tsutsumi, Mitsuye
Turuda, Lily

Uchida, Merry
Uchida, Miki
Uchida, M/M Shoji
Uchida, M/M George K.
Uchima, M/M Kurt
Uchiyama, Alice
Uchiyama, Stewart
Uehara, M/M John T.
Ujiiye, M/M William
Umekubo, M/M Kenji
Urata, Edith H.
Uyeda, M/M Masao
Uyeda, M/M Mason
Uyeda, M/M Sam
Uyetani, Roy

Wada, M/M Robert N.
Wakabayashi, Gene
Wakai, Tad T.

Waller, Charles
Watanabe, M/M Akira
Watanabe, M/M Arnold K.
Watanabe, M/M Frank H.
Watanabe, Grace
Watanabe, Masai
Watanabe, Shinichi
Watanabe, M/M Tom I.
Watanuki, M/M George K.

Yabuta, M/M Tetsuo
Yahiro, Dr/M Ernest
Yahiro, M/M Kenneth
Yaki, M/M George
Yamada, Ayako
Yamada, Cathy L.
Yamagata, M/M Joi
Yamagiwa, George H.
Yamagiwa, Kay
Yamagiwa, Tsuneji
Yamaguchi, Atsuno B.
Yamaguchi, Fred
Yamaguchi, Hero
Yamaguchi, M/M Ikuro
Yamaguchi, Terri
Yamakuchi, Muneyoshi
Yamamoto, M/M Eugene
Yamamoto, Fumi
Yamamoto, M/M George
Yamamoto, Grace S.
Yamamoto, JoAnne
Yamamoto, Midori
Yamamoto, M/M Pete Y.
Yamamoto, Roy M.
Yamamoto, Ruth
Yamamoto, Samuel
Yamamoto, Todd
Yamamoto, M/M William T.
Yamanaka, Henry M.
Yamanaka, M/M Iwao
Yamanaka, Kazuo
Yamane, M/M Fred I.
Yamane, M/M Michael
Yamasaki, M/M Dick T.
Yamasaki, George N.
Yamasaki, Mary
Yamasaki, Ruby A.
Yamasaki, M/M Steven H.
Yamasaki, M/M Yukio
Yamashige, George K.
Yamashita, M/M Henry
Yamashita, Kay
Yamashita, Takeshi
Yamashita, Teruo
Yamashita, M/M Yoshio
Yamate, M/M Hideo
Yamate, Sandra -Witkowski, Brian

Yamauchi, M/M Steve
Yamauchi, M/M Thomas
Yamayoshi, Tom T.
Yanagihara, Mitsuye
Yang, M/M Thomas
Yano, M/M Perry
Yasukawa, Kikuye
Yasunaga, M/M Carl
Yasutake, M/M Gary H.
Yasutake, Rev. S. Michael
Yasutake, M/M Tom
Yatabe, M/M Dudley
Yatabe, Mary M.
Yee, Toy Gen Jean
Yokoo, Dr. Hidejiro
Yokota, Kimi
Yokota, Toshiye
Yokoyama, Lori
Yoshida, M/M Daniel
Yoshida, M/M Gary
Yoshida, M/M Kenneth
Yoshida, Lillian Y.
Yoshida, Ray
Yoshida, Dr/M Tomojiro
Yoshihara, M/M George
Yoshimura, M/M Albert
Yoshimura, M/M Dave
Yoshimura, M/M David
Yoshimura, M/M James
Yoshimura, Kiyoo
Yoshino, M/M Byron Y.
Yoshino, Maurice T.
Yoshino, M/M William J.
Yoshizumi, Kaye
Yusa, Mimi

Zaiman, M/M Isamu



Saburo Ushida, at age 85—1986

Mary Koga

HOLIDAY APPEAL

Friends of the agency who responded to the year-end appeal

Aberer, M/M Joseph C.
Adaniya, George
Akagi, Eddy
Akitomo, M/M Yoshiaki
Arakaki, M/M Charles
Arima, M/M Ernest S.
Asa, M/M Takeru
Asahina, Renzo
Azuma, Alyse

Christ Church of Chicago
Church of Christ Presbyterian

Domoto, Mo

Falls, Dr. Arthur G.
Fujii, Tomiye
Fujimoto, M/M Benjamin
Fujimoto, M/M Ralph
Fujimoto, M/M Shigeyoshi
Fujisawa, Hiroshi
Fujisawa, Wayne T.
Fujishima, M/M Mitsuo
Fujita, M/M Charles
Fujitara, Henry & Gladys
Fujjye, Holly
Fukami Family
Fukami, M/M Frank
Fukawa, M/M Shioji
Fukui, Henry & Mary
Furukawa, M/M Hiroshi

Gokan, M/M Donald

Hanano, Charles
Hanamoto, M/M Henry
Hasegawa, Betty F.
Hashimoto, M/M Tomio
Hashisaka, Misayo
Hatanaka, M/M Howard
Higa, George or Misao
Hikawa, Richard & Martha
Hirabayashi, Joe Hays
Hirai, Russell-Fujimoto, Martha C.
Hiraoka, M/M Sadayuki
Hirata, Meri
Hoshizaki, M/M Akira

Ichikawa, Alice Y.
Ichishita, Haru H.
Ichiyasu & Assoc., Harry T.
Iida, Miyako
Ikeda, Glenn
Iko, Tetsuo

Imanaka, M/M James
Iseri, Alexander
Ishikawa, Gerald K.
Isoda, Seishi
Itano, M/M Takeo
Ito, George & Dorothy
Ito, Kiyoko
Ito, Valerie
Iwafuchi, M/M Kingo
Iwami, M/M Akira D.
Iwami, Ruth
Iwaoka, M/M Sam
Iwata, M/M Roy T.

Kadota, M/M Paul S.
Kaita, M/M Chris
Kajikawa, Frank M.
Kambara, Frank T.
Kamo, Richard
Kaneko, Kevin & Susan
Karikomi, Henry M.
Katayama, Jerry J.
Kato, M/M Gunpei
Katsuno, Chie
Kawaguchi, George & Falmily
Kawaguchi, Sen
Kawano, M/M Minoru F.
Kawashima, M/M Richard
Kikuchi, Robert A.
Kikuta, Kie & Noboru
Kimura, Lillian C.
Kita, Carl, Real Estate
Kitabayashi, Helen & Sandy
Kittaka, Kumako
Kobayashi, M/M Isamu
Kobayashi, Sumi
Kraus, M/M Pavel
Kubo, Robert S.
Kubose, Rev/M Gyomay
Kubota, Masao Ben
Kuki, Yoko
Kumasaka, M/M Haruo
Kumata, Ruth K.
Kusumoto, Shoji

Lai, Lan Ko & Yue-Yen
Lehrman, M/M Nat
Lin, Vivian
Linblad, Karen & Miles
Lofton, Nathan and Shizu

Maeda, M/M Richard S.
Maeshiba, Elizabeth

Mah, Hisae
Maruyama, Henry T.
Masumoto, Hiromu & Yaeko
Matsuda, M/M John S.
Matsui, M/M Takanobu
Matsumoto, Tom
Mayeda, M/M Ike A.
Mazawa, Ken
Medlin, Pamela A.
Midwest Buddhist Temple
Migaki, Joe & Sueno
Minato, Asao
Mitamura, Charles
Mitani, Ralph Y.
Mito, Paul
Miyakawa, M/M Robert H.
Miyashita, T. Edward
Miyata, M/M Victor
Mizuno, M/M Kashiro
Mori, June K.
Morimitsu, Arthur and Virginia
Morimitsu, George & Judy
Morishige, George
Morishima, Yoshiko
Morita, M/M Motosugu
Morita, Pamela/Melhus, Hans
Munemoto, Kosumi
Mura, M/M Tom K.
Murakami, Dr./M Glenn
Murata, M/M Yoshinori

Nagaoka, Akira
Nagata, M/M Robert
Nakachi, Mitsue
Nakagawa, Shunichi
Nakaguchi, Midori
Nakamoto, Hisako
Nakamoto, M/M Tokuhide
Nakamura, Carolyn K.
Nakamura, Fujije
Nakamura, Uji
Nakane, Aiko
Nakanishi, M/M Toshio
Nakao, M/M George K.
Nakazawa, M/M T.G.
Nambu, M/M Masaru
Nemoto, Elaine C.
Nippon Express-USA Inc.
Nishimoto, Kay
Nishimoto, M/M Kiyoto
Nishimura, Greg
Nishimura, M/M John T.

Nomiya, Takeko A.
Nomura, Masa
Nosaka, M/M Fred

Ochiai, M/M Takeshi
Oda, June
Ogawa, Linda M.
Ogawa, Shu and Hide
Ogi, M/M Robert E.
Ohba, M/M Shunjiro
Okamoto, M/M William
Okamura, Henry K.
Okazaki, Ray & Elsie
Okigawa, Kazuichi K.
Okimura, Hatsy
Omori, Mrs. Toshio
Omuro, Bette S.
One, M/M Dick
Onoda, Hideo S.
Oshiro, M/M Robert K.
Oshita, Thomas
Osucha, Mary
Otsubo, Katherine M.
Ouchi, M/M James
Oya, George S.
Ozaki, Kiyono
Ozaki, M/M Sam
Ozawa, George & Atsumi
Ozeki, M/M Ken
Ozima, M/M Karl T.
Ozima, M/M Shigenobu

Paulsen, M/M Eugene H.

Rodriguez, Amy

Sakaguchi, Katsumi
Sakai, M/M Henry
Sakai, Yoshitaro
Sakamoto, Jiro
Sasaki, Willy
Sasamura, Misaki
Sata, Richard
Schenk, Betty
Shieh, Chi- Lin
Shigehira, Tatsuyo
Shikami, M/M James Y.
Shimokubo, Tsugi
Shiohara, Nobuko & Elsie
Shiozaki, M/M Ted
Shishido, Melvyn T.
Sonoda, M/M Jeff
Sugano Travel Service

Sugimoto, Midori
Sugiyama, Kazuo
Sumi, M/M Joseph K.
Sumi, Sandra S.
Sunada, Hideo
Suzuki, Joseph K.
Suzuki, Kin
Suzuki, M/M Sakari

Tagami, Edward C.
Tagami, M/M Kay
Takamoto, M/M Naoto
Takehara, Ei
Takehara, M/M Ichiro
Tamada, Kay & Ruby

Tamashiro, Masanobu
Tamura, Atsuko
Tamura, Ralph K.
Tamura, M/M Richard
Tanabe, Fumiko & Osamu
Tanaka, M/M James
Tanaka, M/M Robert M.
Tani, Joyce
Tani, Richard T.
Tanouye, Toshi
Taura, Joe
Taura, M/M Mas
Teraji, M/M Thomas S.
Toba, M/M Mitsuru
Tohei, M/M Akira

Toko America, Inc.
Tomita, Harold H.
Toyama, M/M Hiro
Tsugawa, M/M Tom T.
Tsuji, Mito
Tsujiyama, Yoshimi
Tsurutani, M/M Daniel K.

Uchima, George
Uchiyama, Stewart & Dorothy
Uyehara, Dennis & Jane
Ujiye, M/M William

Watanabe, M/M Tom

Yamada, Cathy

Yamada, Richard & Aiko
Yamamoto, M/M Glenn
Yamamoto, Midori
Yamamoto, Ruth
Yamamoto, Samuel
Yamanaka, Kazuo
Yamashige, George K.
Yamashita, Takeshi
Yamauchi, M/M Steve
Yokoo, Hidejiro
Yokoyama, Lori S.
Yoshida, M/M Daniel
Yoshimura, Dave Yoshino, Maurice

GENERAL CONTRIBUTIONS

Adaniya, Mrs. Yoshiko
Anonymous
Arakawa, M/M Paul T.
Avakian, Michael

Bank of Chicago - Peterson, William
Brown, Lillian

C. Itoh & Co. (America) Inc.
Chase-Ziolek, Keith
Chicago Japanese American Council

Estate of Yasuo Mory
Estate of Katsumi Nozawa
Estate of George Yamana

Fujii, John J.
Fujimoto, Martin
Fujishima, Kaz
Fujita, Charles & K. Yoko
Fukai, Kimie

Genovese, Janice D.D.S.
Gloeckle, M/M Robert

Harano, Kay T.
Helfrich, Willis W.
Hibino, Mieko
Hirano, Takahiro
Honda, Kusuo K.
Hirata, Meri

Imamura, Teru
Ishijima, Hitoshi & Satsuki

Japan Airline - Eguchi, M.

Kadowaki, Joe
Kawasaki, M/M Corky T.
Kemper Group Employees
Kimura, Toyoko M.
Kittaka, Kumako
Kodama, Ted A.
Kramer, Sophie
Kucharski, Albert & Mary

Lake Street United Methodist Church

Marubeni America Corp.
Matsui, Shigeru
Matsunaga, Hatsu
Minato, Asao
Mishima, Jean M.
Mitsui & Co. (U.S.A.)
Miyagishima, Umpachi
Miyata, M/M Tom T.
Miyachi, Keiji
Motoki, Haruhiko & Connie
Motoki, Seichi
Mura, M/M Tom K.
Murakami, Sadao

Nagata, M/M Robert S.
Nagata, Suehiro S.
Nakagawa, Ayeno & Ruby
Nakamoto, Hisako
Nakamura, Teru
Nakao, George K. & Miyeko

Nakayama, Dr. Joe M.
Nippon Express, U.S.A. Inc.
Nishimura, Kazuto
Nishioka, Marie T.

Ogisaka, Roy
Ohono, Morito
Okamoto, M/M William
Okayama, Akio
Ozawa, George

Park, Keum Sook
Potter, Louise

Sanbonmatsu, Makoto
Sato, Hiroshi
Seyama, Mamoru
Shigehira, Natsuko
Shimoda, Osawa
Shimoda, Sawa
Shiratsuki, Misao & Sumiko
Shishido, Melvin
Sugano Travel Service
Suzuki, Namiye

Takeda Chemical Industries, Ltd.
Takamoto, M/M Naoto
Tani, Benjamin S.
Tanimura, Sumi
Taura, Joe
Tengan, Sadako
Toguri, Ikuko
Toshiba - Tungaloy Mfg. Inc.

Tryblonski, Lorraine
Tsuchiyama, Joe

Umekubo, Hattie
University of Chicago
Universal Pen Hospital - Himoto, Sam
Uyetani, Roy

Waller, Charles
Ward, Thomas D.D.S.
Watanabe, Shigekazu
Wilson, Carolyn

Yamagata, Yuji
Yamagiwa, Tsuneji
Yamakoshi, Noby
Yamasaki, Ruby A.
Yamasaki, Shiori & George
Young, Nancy

CONTRIBUTORS FUND

Friends of the agency responding to the Newsletter envelope

Adaniya, Yoshiko
Adaniya-Kane, Ruth
Aki, M/M George
Akitomo, Yoshiaki
Aragaki, M/M Herbert
Asahina, Renzo
Azuma, Steven Y.

Fuji, Tomiye
Fujii, Masao & Mary
Fujimoto, Martin
Fujita, M/M Charles
Fukai, M/M Stanley Y.
Furuya, Robert
Furuyama, William

Gokan, M/M Donald

Hasegawa, Dr/M Junji
Hayashi, Peter
Higa, George
Hirakawa, James K.
Hirata, Meri
Hori, Dr/M Ray Y.

Ikoma, Sumio
Imanaka, James
Imaoka, M/M Ralph
Inouye, M/M George D.
Ishibashi, Cecilia
Itano, Masashi
Ito, Hiroshi
Itoku, Ken & Toshi
Iwami, Ruth N.
Iwaoka, May

Iwaoka, M/M Sam
Kaijara, Tom & Lynn
Katayama, Jerry J.
Kawaguchi, Sen
Kittaka, Kumako
Kobayashi, Birgit
Kobayashi, M/M Isamu
Kodama, Masahiko
Koga, M/M Albert M.
Kushino, Patrick B.

Lin, Vivian
Lofton, Shizu & Nate

Maeda, Samuel S.
Masada, Alice A.
Matsumoto, Pat
Matsumoto, Shig & Ellen
Matsumoto, Tom
Matsuoka, Fusa
Matsushita, M/M Akira
Matsuzaki, Hiroshi
Mazawa, M/M Shigemi
Miyake, Andy T.
Miyashiro, Jean M.
Morimoto, Dr. Paul
Mura, M/M Tom K.
Murakami, Dr/M Glenn
Murata, Yoshinori

Nakachi, Mitsue
Nakamura, Karl K.
Nakamura, M/M Robert W.
Nakamura, Teru
Nakano, M/M Henry

Nakano, Maye
Nakao, M/M George
Nasu, Mieko
Neeno, Tsuneko
Nishimoto, Kay
Nishimura, Greg
Nojiri, Nobuo

Ogasawara, Minoru & Fumiko
Ogawa, Hide & Shu
Ohlson, Virginia M.
Okigawa, Kazuichi
Omori, Toshiko
Omori, Hatsuko
Oshita, Thomas

Pittelkau, Hisae

Rubenstein, M/M George A.

Sakai, M/M Jack
Sasamura, Misaki
Shida, M/M Mitsuzo
Shikami, M/M R. G.
Shimoda, Osawa
Shiozaki, M/M Takashi
Shiro, Joji
Sonoda, M/M Kiyoshi
Suga, M/M Shigeo
Suzuki, Namiye

Tagami, M/M Kay
Takano, Yukiko
Takemoto, Hideo J.
Takeshita, Goro

Tamada, M/M Kay
Tamashiro, Masanobu
Tamura, Susan
Tanaka, James
Tando, M/M Bob
Tani, Joyce S.
Tanii, May
Tani, Richard T.
Tanouye, Mrs. Toshi
Taura, Bill & Martha
Terada, Yoshiko
Teraji, Thomas S.
Teshima, Dr/M Roy
Toyama, Hiro
Tsuchiyama, Yuri
Tsugawa, M/M Tom T.
Tsurusaki, Jeri

Waller, Charles
Watanabe, M/M Arnold K.

Yabuta, Tetsuo
Yamaguchi, Tami
Yamaguchi, Terri
Yamamoto, Ruth
Yamamoto, M/M William
Yamanaka, Rocky & Alyce
Yamashita, Takeshi
Yoshida, Ray
Yoshino, M/M Maurice T.



Miki Uchida, at age 82—1986

Mary Koga

MEMORIAL GIFTS

Gifts made as a gesture of sympathy to remember a loved one, a friend, a neighbor, or a business associate.

Aragaki, Kathy
Arai, Tom
Aruguete, Christine, M.D.

Fukuya, Mitsuo & Barbara

Hamamoto, Ayako
Hasegawa, Dr/M Junji
Hashioka, Roy & Takako
Horita, M/M Shoji

Ito, Kiyoko M.

Kushino, Yuri & Marcia

Maruyama, M/M Henry T.

Nakagawa Family
Nakamura, Uji
Nomura, Martha

Odanaka, M/M Fred H.
Okawara, Miya-Osakada Family
Olson, James E., Chapter 75

Rotman, Margolith

Sahara, Toshiko
Sato, Michael
Shirataki, Joann
Shiratsuki, Misao
Stipok, James P., D.D.S.

Tagami, Edward C.
Takeuchi, Sara
Tamura, Atsuko

Teshima, Lucy & Roy
Tomihiro, Chiye
Trotta, Phyllis

Yamamoto, Grace
Yamanaka, Alyce
Yukawa, Clifford

CORPORATE AND FOUNDATION GIFTS

Funding grants to help support the agency's operating budget or specifically designated projects.

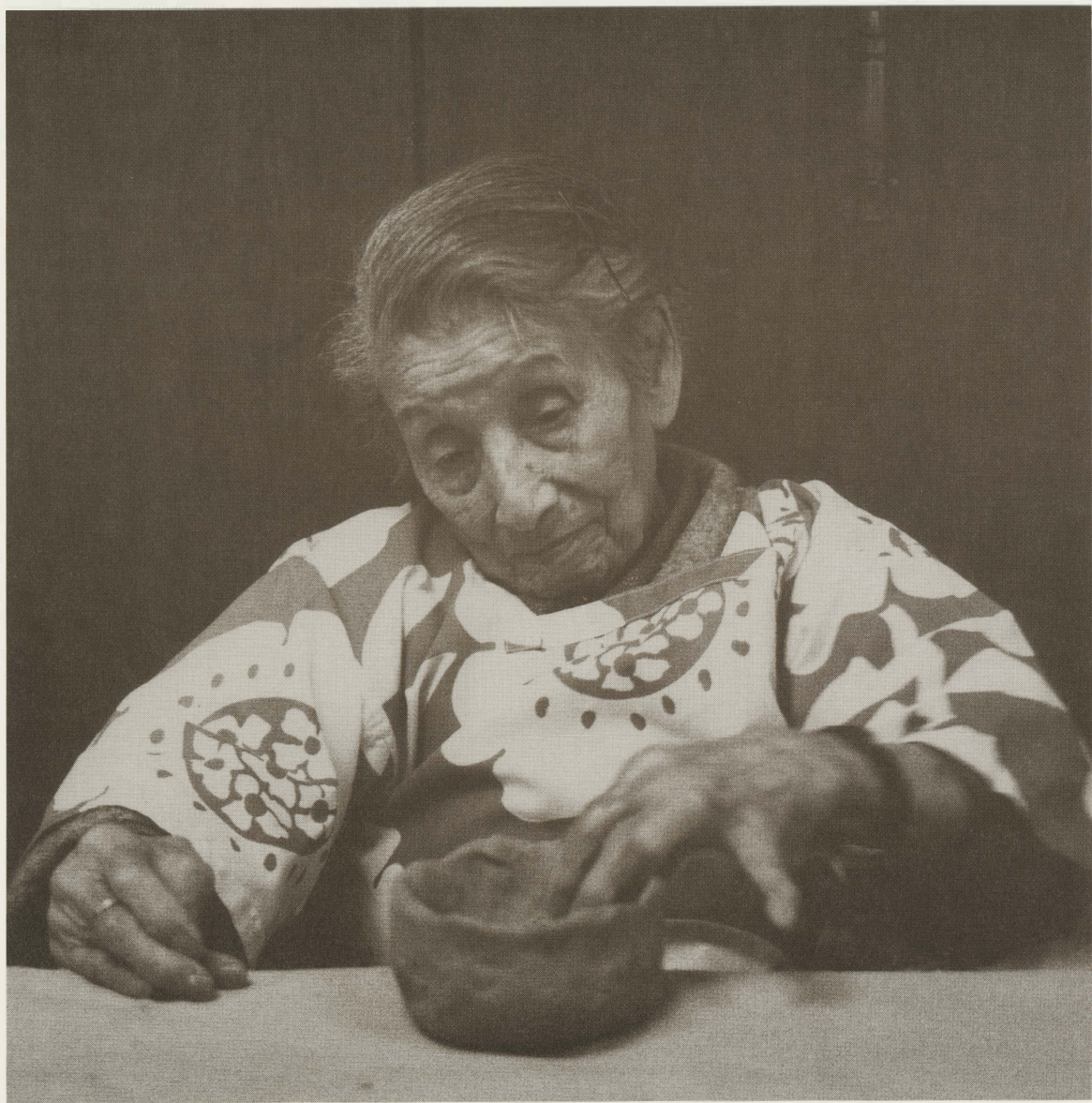
Aetna Life & Casualty
Church of the Holy Spirit of Lake Forest
The Albert Pick, Jr. Fund
McCormick Charitable Trust
Uptown National Bank
BCA Social Welfare Fund

MATCHING GIFTS

Contributions by friends of JASC that have been "matched" (equally or in greater multiples) by the companies with whom they are employed.

G. D. Searle & Co. (James Ouchi)
Kemper Financial Services (Michiko Ichikawa)

Except for those who specifically indicate that they do not wish to be listed, every effort is made to insure that all donors are properly recognized in this annual report. Please contact the development and public relations department regarding any omissions or corrections.



Okiye Inouye, at age 79—1987

Mary Koga

STATEMENT OF REVENUE AND EXPENSES

JAPANESE AMERICAN SERVICE COMMITTEE

Condensed Statement of Revenue and Expenses for the year ended June 30, 1990.

REVENUE:

Philanthropic Support	\$336,000
Government Support	201,000
Nursing Home Fund Contributions	80,000
Others	<u>83,000</u>
Total Revenue	\$700,000

EXPENSES:

Program Services	\$145,000
Support Services	<u>130,000</u>
Total Expenses	\$595,000
Excess of Revenue over Expenses ..	\$105,000

*This income was received for the Nursing Home Fund-Raising Campaign and is to be used for the construction and operation of a nursing home.

A copy of our complete Financial Statement, audited by Yamada & Isono, Certified Public Accountants, can be viewed at the JASC Office.

BOARD OF DIRECTORS

Executive Board

President	Arthur T. Morimitsu
Vice Presidents	
Program	Martha Fujimoto
Finance	Calvin Mansho
Public Relations	Betty Nakanishi
Facility	Hiroshi Ikano
Treasurer	Nancy Yoshida
Secretary	Merry Uchida

Ex-Officio

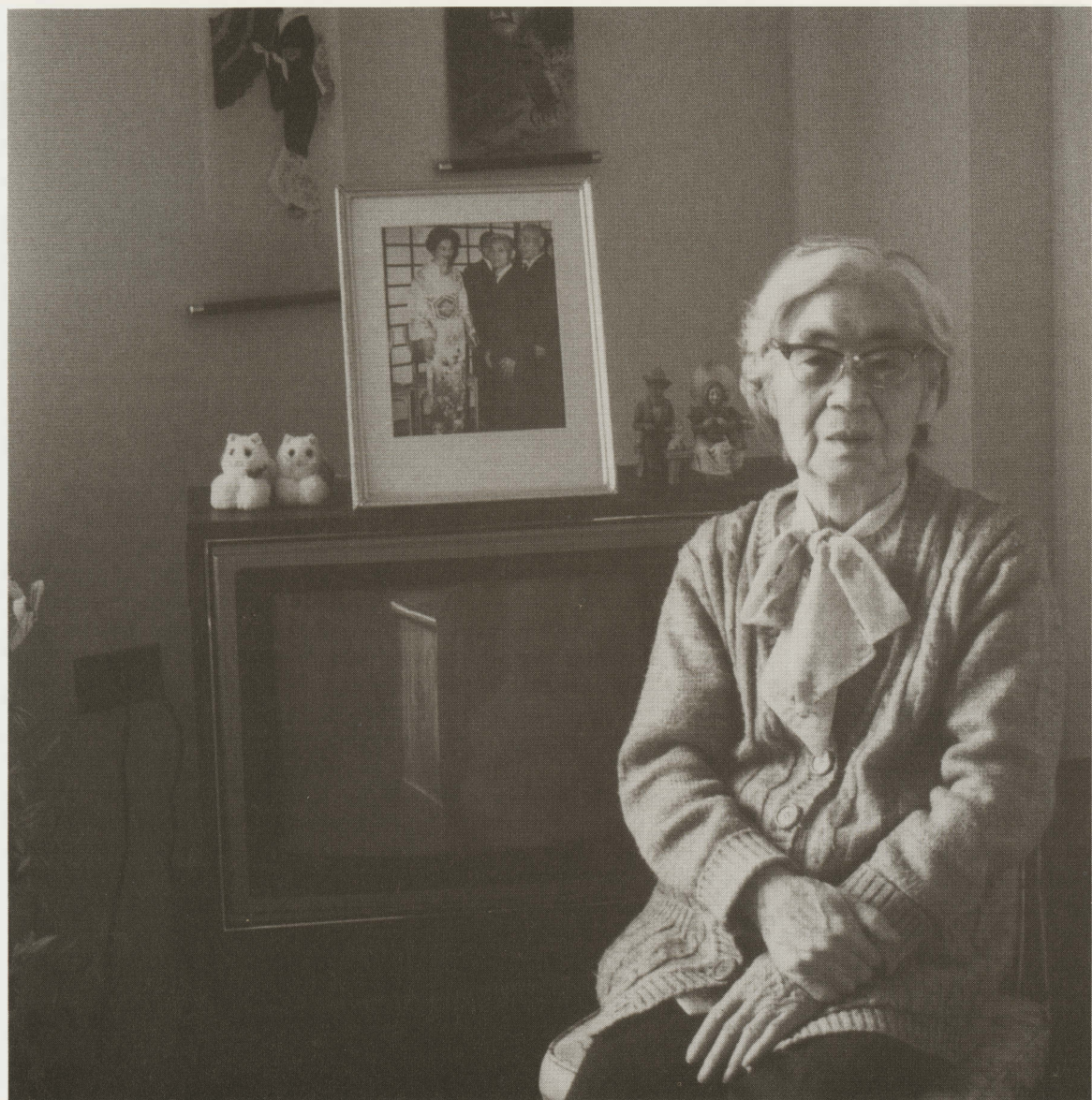
Noboru Honda
Lillian C. Kimur
Daniel K. Kuzuhara
Harry K. Mayeda
Lincoln Shimidzu
Thomas S. Teraji

Board of Directors

Dr. Kenji Aimi	Joe Nakayama
Gene Honda	Susan Narimatsu
Roy Iwata	Chieko Onoda
Evy Johansen	Makoto Sanbonmatsu
Paul Kadowaki	Roy Yamamoto
Neal Kanemoto	Sandra Yamate
Gene Mayeda	Lory Yokoyama
Yukinao Mizuta	Kiyo Yoshimura

Advisory Board

Ben Chikaraishi
Tomonao Iino
Kashiro Mizuno
Eizo Niishi
Rev. Kei Satoh
George Teraoka
Shig Wakamatsu



Tomayo Meriki, at age 86—1987

Mary Koga



PORTRAITS OF "THE QUIET PEOPLE"

Mary Koga, one of the early members of the Japanese American Service Committee and an artist/photographer, is known for her photographic project spanning 20 years that captures Issei (first generation Japanese Americans) in their environment at home, at the JASC Sheltered Work Center, Day Care Center for the Elderly, at Heiwa Terrace, a senior citizens housing development, and elsewhere.

A member of the board of directors for several years beginning in 1958, Koga was a social worker and an Assistant Professor at the University of Chicago from 1958-69. She holds a BA degree from the University of California, Berkeley, an MA degree from the University of Chicago and an MFA degree from the School of the Art Institute of Chicago. For seven years she taught at the Photography Department of Columbia College.

During her involvement with the JASC she devoted much attention to the needs of the Japanese Americans faced with social and interpersonal problems. During the later years, combining her interest in people and profession of photography, she focused on documentary works of people in addition to photographing still lives of natural forms.

On May 24, 1990, Koga was inducted in the "Senior Citizen's Hall of Fame" at the Chicago City Hall. She is on the Board of Directors of Heiwa Terrace and the Japan America Society of Chicago and is listed in Who's Who in America, Who's Who in American Women, Who's Who in American Art and World's Who's Who of Women.

A recipient of several awards in art, Koga's photographs have been featured in numerous national group exhibitions, one person shows and included in many private and public collections.

1989-90 ANNUAL REPORT
Published by the Department of Development
and Public Relations

Japanese American Service Committee
4427 North Clark Street
Chicago, Illinois 60640

Arthur T. Morimitsu
President

Masaru Nambu
Executive Director

Ivars Liepins
Director of Development
and Public Relations

JAPANESE AMERICAN SERVICE COMMITTEE

A nonprofit social service agency, founded August 30, 1946 serving families, the aging, and emotionally disabled among Japanese, other Asians, and non-Asians in the Uptown-Edgewater-Lakeview communities on Chicago's northeast side.

Member of...
United Way of Chicago
National Council on the Aging
Chicago Japanese American Council
Illinois Association of Day Care Providers
Metropolitan Chicago Coalition on Aging
Coalition of Limited English Speaking Elderly

Japanese American Service Committee does not discriminate in admission to programs or treatment of employment in programs or activities in compliance with the Illinois Human Rights Act; the U.S. Civil Rights Act; Section 504 of the Rehabilitation Act; the Age Discrimination Act; the Age Discrimination in Employment Act; and the U.S. and Illinois Constitutions. If you feel you have been discriminated against, you have a right to file a complaint. For information, contact Masaru Nambu, Executive Director at 275- 7212.

Japanese American Service Committee of Chicago
4427 North Clark Street, Chicago, IL60640
Phone: (312) 275-7212