



JASC

Annual Report
2005-2006



Honoring the Past,
Strengthening the Present,
Envisioning the Future



First held in 1948, the Chicago Resettlers Committee Picnic soon became an eagerly anticipated annual event. It gave the Japanese American community an opportunity to come together as a whole for a day of fun, festivities and food. With just a blanket and a *bento* box, family and friends were guaranteed to have a good time, whether participating or just watching the eagerly contested events, such as the races and the watermelon smash.

These photographs are from the Mary and James Numata Collection, JASC Legacy Center.

Honoring the Past, Strengthening the Present, Envisioning the Future

In August of 1946, the Chicago Resettlers Committee (CRC) was established to assist the federal War Relocation Authority in resettling the approximately 20,000 people of Japanese ancestry who had emigrated to Chicago from the war-time concentration camps. The CRC:

- referred people to needed services such as banks, insurance and real estate agents, attorneys, dentists and doctors;
- supplied them with information about stores, restaurants and hospitals;
- helped find employment, housing and churches;
- helped fight discrimination;
- coordinated recreational activities; and
- provided personal contacts.¹

The CRC filled the immediate needs of this very specifically defined population. In 1954, its original goals met, the organization changed its name to the Japanese American Service Committee (JASC), reflecting the shift from resettlement to social services and community programs. As times changed and the original Japanese American emigres aged, the JASC continued to evolve in both small and substantial ways.

Presently, the organization is poised for a sea change.

This past year the staff and board of the JASC, while continuing to honor the past and strengthen the present, have spent hundreds of hours envisioning the organization's future. The strategic plan that was developed will help guide and shape the JASC so that it can remain vital, relevant and as targeted in its goals over the coming years as it was when the organization was conceived.

¹A Brief History of the JASC, Deborah Mieko King Burns, JASC Archivist, revised September 2001

MISSION



JASC's longest-running program, **Home Support Services**, provides housekeeping, as well as much-needed social interaction and emotional support, to seniors to enable them to maintain their independent living (above). Supervisor Helen Nakayama and her homemakers served an average of 20 clients each month for a total of 4,733 hours of personal care, housekeeping, shopping, escort and related services this past year. While a majority of the clients are Japanese Americans, this service is available to all.

In November of 2005 as staff and board members gathered at their first strategic planning meeting of the new fiscal year, it became obvious that there was a problem with the organization from the outset. Not one of those present felt comfortable moving forward under the then current Mission Statement. Since a mission statement defines why an organization exists, does what it does, and whom it serves, this was a glaring negative that had to be addressed before any thought of the organization's future could take place.

Staff and board members talked about what needs the JASC had fulfilled in the past, what its capabilities were at present, and what community needs were going to be important in coming years.

The idea of exactly how to define this "community" whose needs the organization was going to meet precipitated much discussion. The Issei and Nisei (immigrants from Japan and their American offspring), the original groups the JASC was founded to serve, have either passed or have reached a fairly advanced age. Their descendants are not centered in any one geographic community, but are dispersed across Chicagoland and the Midwest, and do not have the same barriers of language or culture barring them from participating fully in the larger community.

Meeting facilitator Francis Wong, a San Francisco-based consultant to Asian American organizations and the founder of Asian Improv aRts, handled the situation with aplomb and nimbly guided the disparate group to consensus on a new Mission Statement, which was adopted at the next board meeting.

The current [Mission Statement](#) which guides JASC's actions now and into the immediate future, is:

The mission of the JASC is to preserve and raise awareness of Japanese American culture and heritage, and promote the physical and spiritual well-being of Japanese Americans and the greater multicultural community in the Midwest.

Vision Statement

At the culmination of our first strategic planning meeting, attendees realized that the JASC would never be able to complete the strategic planning process without outside aid and expertise. Francis was commissioned to lead us through what turned out to be a seven-month process.

At our next session in January 2006, staff and board members discussed the organization's vision. If a mission statement exemplifies why an organization exists, a vision statement presents the how; it is the bridge between an organization's mission and goals.

After much discussion, attendees came to a consensus and established JASC's Vision Statement:

The vision of the JASC is to promote and provide quality services and innovative programs, available to all, from a foundation of Japanese American culture.

Core Values

Everyone agreed that it was this last part—the "foundation of Japanese American Culture"—that helped make JASC's programs and services unique, and of interest or value even to non-Japanese Americans. But what were those cultural values that underlay JASC's programs and services?

Francis led us on a self-discovery of what staff and board members felt to be the underpinnings of the organization. Over 40 traits were presented and discussed by the group, many of them best expressed in Japanese, such as Gaman (perseverance), Enryo (holding back, putting others first), and Shikata ga nai (can't be helped, do the best you can no matter what).

After much brain-storming, the multitude of traits was distilled down to the JASC Core Values Statement:

JASC will meet its mission by:

- committing to the highest standards of excellence and quality;
- being socially responsible and acting ethically and with integrity;
- honoring our heritage and legacy;
- being creative, adaptable and innovative;
- being respectful, thoughtful and welcoming to all.

The **Legacy Center** (archives and library) is one of the most vital of JASC's programs. Its archives comprise a unique collection of photographs, documents and artifacts that help keep alive the legacy of the Japanese American experience during the war and their subsequent resettlement in Chicago. This past year Archivist Deborah Mieko Burns serviced 92 research and referral requests (including one from a high school student whose project won honors at the annual Chicago Metro History Fair), contributed material to two exhibits and one documentary film, and accepted 30 donations of new collection material, including this informal portrait, from the Estate of Mary and Albert Koga, taken at JASC's Senior Work Center, in 1970-1971 (below).



JASC's facility is a vital **Community Center** for the Asian American community. Besides being residence to **Tampopo Club**, a Japanese cultural program for preschoolers, **Asian Improv aRts Midwest** and **JASC Tsukasa Taiko**, the premier Japanese drumming group in the Midwest, **Tohkon Judo**, the third largest judo club in the U.S., and a score of other organizations, JASC is now home to the **Fujima Ryu of Chicago** classical dance troupe. With over 800 people of all ages and ethnicities using the facility each week, there is the chance for special interaction, such as this one between the Tampopo Club kids and the Adult Day Services seniors (below). JASC also hosted a variety of events programmed by other organizations, including a senior caregiver conference, an Asian American Studies teach-in, and a teachers' flea market.



Central to the development of a strategic plan was the setting of long-term goals. These goals need to advance JASC's mission as they fulfill membership and community needs. To envision the JASC ten years in the future, the staff and board started with the newly drafted Mission Statement and findings from *The Nikkei Community Assessment, 1999-2002*, a survey conducted by the JASC, which showed the Japanese American community considered the following to be the most critical issues:

- preserving cultural heritage;
- developing Japanese American leadership;
- developing programs that positively recognize and address the growing multiracial/multicultural community;
- preserving the community through social gatherings.

Attendees brought forward their ten-year goals, which were then discussed and arranged into categories. What evolved was a consensus on three ten-year goals.

1. Destination Center

Create a destination center whose design showcases Japanese culture and tradition. The space will be flexible in use and be designed to accommodate a variety of programs and services.

JASC staff and board members envisioned creating a place that would be a center of cultural gravity, not just for Japanese Americans, but for all those in the greater community interested in Japanese American heritage and culture. Akin to some of the facilities built in Los Angeles and San Francisco, it would be *the* place people in the Midwest would think of, to go for things Japanese American.

A variety of programs and services would be offered at the destination center. They would be developed for children, families, teens, young adults, adults and seniors. Like JASC's current facility, concurrent use by different groups would be fostered, so that preschoolers might see and interact with seniors, teens would have the chance to be mentored by adults—so that even with programming specifically targeted to various age or interest groups, it will be a place where the entire panoply of life is visible and interactive.

2. Outreach

Reach out to the dispersed Japanese American population, offering broader services, partnering/coordinating with other organizations to share resources and consolidate efforts. This includes the development of the infrastructure and capacity for the support of outreach programming.

Acknowledging that the Nikkei (people of Japanese ancestry) community is widely dispersed, the JASC staff and board proposed bringing services and programs out to them. Staff, methods of transportation, facilities and a communications network would all need to be developed to support the outreach. Once satellite programs were developed in the Chicago metro area, expansion of services and programs into neighboring Midwestern states would be considered.

3. Leadership

Provide leadership in a consensus-building, facilitating manner among all Japanese American community organizations, and look for commonality of purpose and opportunities for collaboration.

With the passing of the long-standing leadership provided by the Issei and Nisei, Sansei and Yonsei are stepping up into leadership. They are faced with the challenges of a more dispersed and disconnected community. For the Japanese American community to survive, various independent groups will need to work together more collaboratively. JASC would like to use its resources to help open up communication and cooperation, to benefit the community at large. JASC would also collaborate with other organizations to develop programs where teens and young adults can be mentored and gain practical experience in leadership.



JASC's **Adult Day Services** is one of the oldest programs of its type in Chicago. During this, its 25th year, an average of 48.5 seniors per month were provided with an annual total of 40,493 hours of care. Supervisor Melba Ristow, R.N. and her staff help stabilize or improve the seniors' mental, physical, emotional and social well-being, allowing them to continue to live in the comfort of their own homes, and helping to preserve their family structure, dignity and self-respect. JASC was awarded two United Way Venture Investment grants this year to make an assessment of the health access needs of isolated Nikkei seniors in the city and suburbs. This research will lead to the establishment of future outreach programs for the elderly.

JASC's **Counseling**

program helps clients of all ages and ethnicities work out problems in their daily lives. This year, Supervisor Frances Chikahisa, M.S.W., L.C.S.W. and another counselor provided an average of 110 hours of service to clients, up 30% from last year. Additionally, JASC counseling services were approved for third party reimbursement. A new "Out of the House" program was started this year to provide seniors (who do not need the additional personal care provided by Adult Day Services) with a place to gather for a three-hour program of activities, twice a week. Although the program enrollment is small, it is enthusiastically endorsed by the participants, who, among other activities, do group stretching and calisthenics twice a week, and get a chance to try their hands at Ikebana (flower arranging, below).



Before there could be any further planning done, the board and staff of JASC needed to take a hard look at where the organization stood at present. In addition to reviewing the information from the Nikkei Community Assessment, we performed a SWOT analysis. Each staff and board member was asked to evaluate the JASC against these internal (strengths and weaknesses) and external (opportunities and threats) measures. Then, Francis facilitated a session where the lists of strengths, weaknesses, opportunities and threats were prioritized, and action items were proposed.

Strengths

To no one's surprise, the **JASC staff** was noted as the organization's primary strength. Staff members are dedicated, experienced, often exceed expectations, and go beyond their job titles to support the organization. The next most important strength was deemed to be **JASC's community presence**, support and history. Events draw a broad community audience, there has been a strong core of volunteers and members, 60 years of service has made JASC notable in the non-profit community, and a majority of funding comes from community support. Another noted strength was **JASC's property**, which is wholly owned, and has increased tremendously in value, with its location in a resurgent neighborhood. Also making the list as assets were **JASC's programs**, the board, the growing collaborations with other organizations, and greater staff-board cooperation.

Weaknesses

The **building** is considered unattractive. While necessary repairs and improvements to the building will be carried out, the JASC's long-term existence in the current facility will be assessed. Even though the **board** was noted as a minor strength (because board members had begun to show more commitment and energy), it was singled out as a major weakness because of the past inactivity of members and the **lack of general agreement on direction**. The seven months of strategic planning sessions did much to help correct these conditions and get board members to communicate with each other and invest more time and energy into JASC affairs. The lack of direction or leadership has been directly improved by the strategic planning process. JASC now does have a focus and direction, and staff and board members have a better understanding of their own and others' roles.

Opportunities

SWOT participants were able to identify some very real opportunities where JASC could develop and grow, congruent with its mission and ten-year goals. These often come from an acknowledgment of a weakness—that except for within the organization's membership or the non-profit community, most people in Chicagoland do not know about JASC and its offerings. Handled correctly, this represents a huge opportunity to **market the organization's services and programs**. It was also noted that many in the dispersed Nikkei community are unaware of the JASC's existence, so that marketing efforts to this already targeted group should prove fruitful.

Another area of opportunity was in the **identification of and collaboration with other groups**. These could be groups that could be allied with JASC through ethnicity, cultural interests, historical interests, educational interests, art interests or geography. While this has been done for specific projects and programs that have been very successful, a systematic approach, in line with our goals and objectives, represents an excellent opportunity.

Developing programming for young people, and increasing their participation in JASC were noted as excellent opportunities. Programming geared specifically to their tastes and interests would help the organization become more relevant to their lives. Since many of the younger Nikkei might be multiracial, it is imperative that JASC appeal to them on more than a strictly Japanese American basis.

Threats

Threats are external items to keep watch of on an organization's event horizon. Nothing can be done about them directly, but they may advance to a point where the JASC will need to adapt. The top threats participants identified were the **changing Japanese American population**, the **loss of the voices of the Issei and Nisei** who can directly express the importance and impact of the internment and resettlement experiences, and the **continuing soft funding environment**.



Fuji Festival and Silent Auction continues to be JASC's largest fundraiser, this year raising \$105,000 for the organization. Hundreds of hours of preparation go into holding **festivals** like Holiday Delight and Kodomo Matsuri (Children's Festival, above) and Fireflies in Flight. JASC also co-presented numerous events this year, including Day of Remembrance, which marks the signing of the order to remove persons of Japanese ancestry from the West Coast during World War II.

OBJECTIVES

After reviewing the suggested action items developed after the SWOT analysis, reviewing all the material from the strategic planning sessions that had come before, utilizing his expertise and experience in developing strategic plans for other Asian American organizations, Francis created year 1, year 2 and year 3 objectives that would help JASC realize its ten-year goals.

Year 1

During the 2006-2007 fiscal year, the JASC staff and board are committed to carrying out the following objectives:

1. Increase JASC Capacity through new positions and staff and board development initiatives (assessment, planning, training).
2. Secure a stretch goal of \$194,000 in new revenue to fund first year strategic plan initiatives.
3. Raise the profile of the Cultural Programs component as a high-quality, innovative program that reflects Japanese American experiences and values through increases in capacity, design development process and the 60th Anniversary Campaign.
4. Make modest increase (10%) in Social Services Program service units through increases in capacity.
5. Stabilize JASC positioning as a leading organization serving Nikkei in Chicago through a strategic marketing and communications initiative as part of the 60th Anniversary Campaign.
6. Launch Facilities and Equipment Development Initiative through
 - a. assessment process for current property;
 - b. implementing Improvement Plan I;
 - c. a planning process for further improvements to current facility;
 - d. a needs assessment for future facility.
7. Conduct needs assessment and planning process for potential regional expansion of service area.
8. Implement assessment and planning phase for strengthening collaborative relationships in the community.

JASC continues to upgrade the quality and depth of its Japanese cultural **classes**. This year saw the introduction of Shamisen (lute) taught by Tatsu Aoki, artistic director of Asian Improv aRts Midwest, Shinobue (bamboo flute) taught by JASC Tsukasa Taiko instructor Jeff Chan, and Enka/Minyo (new dance/folk dance) taught by Sensei Fujima Shunojo. About 600 students of all ages and ethnicities received instruction at JASC in the Cooking, Ikebana, Japanese Language, Sumi-e (ink painting, below), Suminagashi (floating ink paper marbling), Origami (paper folding), Ceramics, and Taiko classes.



Year 2

During the 2007-2008 fiscal year, the JASC staff and board are committed to carrying out the following objectives:

1. Continue to increase JASC Capacity through new positions, staff and board development initiatives (assessment, planning, training).
2. Secure a stretch goal of \$170,000 in new revenue to fund second year strategic plan initiatives.
3. Pilot new program design activities for Cultural Programs.
4. Continue with modest increases (10%) in service units by Social Services.
5. Begin expansion of membership and stakeholder base in second phase of strategic marketing and communications initiative.
6. Implement Facilities and Equipment Improvement Plan II.
7. Implement Pre-planning Phase for Capital Development Campaign.
8. Pilot Phase for regional expansion of programs.
9. Pilot collaborative program initiatives.

Year 3

During the 2008-2009 fiscal year, the JASC staff and board are committed to carrying out the following objectives:

1. Continue to increase JASC Capacity through new positions, staff and board development initiatives (assessment, planning, training).
2. Secure a stretch goal of \$135,000 in new revenue to fund third year strategic plan initiatives.
3. Fully implement new Cultural Programs design.
4. Continue modest increases (10%) in service units for Social Services.
5. Institutionalize regional expansion of programs .
6. Continue to expand membership, audience and client base for organization through third year of strategic marketing and communications initiative.
7. Implement feasibility study phase for capital development campaign.
8. Strategic Planning for 2009-2012 period.

Summation

JASC staff and board have committed to a strategic plan calling for major change and growth for the organization. They believe it presents a plausible path to a future where JASC is a relevant, vital community asset for Nikkei in the metropolitan area, as well as recognized source for presenting Japanese American culture and heritage to the Midwest community at large.



JASC believes in the value of proactive health care. Over the years staff have developed a host of **wellness** programs to aid community members in staying in good health. Besides the bi-annual health screenings (above), free flu and pneumonia shots (in conjunction with the Chicago Department on Aging), and classes like Tai Chi exercises, Taiko, judo for women, and folk dancing, JASC also hosted presentations on the new Medicare Part D, an AARP driver safety course and a Rules of the Road review.

創立 60 周年を控え、将来を展望する 準備が整えられた一年

戦時強制収容所を出てシカゴに転住した日系人が、住居を求め、職を求めて生活を再開しようとした時、一番必要とした組織として 1946 年、定住者会の前身、転住者委員会が設立され、以来 2006 年で 60 年、人間ならば還暦を迎えたこととなります。

定住者会の 2005～2006 会計年度は、通常のプログラムの運営に加えて、この記念すべき年をどのように祝うか、単なるお祭ではなく、過去を振り返ってより良い未来を展望するために、理事や事務局長、各プログラムの主任らによって何度も会議がもたれました。

それらの結果は 2006 年から 7 年にかけて、予定されている各種行事や社会福祉プログラムに、形として現れてくることでしょう。

本会計年度の活動をプログラム別に振り返り、概略を報告します。

アダルト・デイサービス (主任：メルバ・リストウ)

シカゴで最も長い歴史を持つ定住者会のアダルト・デイサービス・プログラムはシルバー・アニバーサリーの 25 年になりました。今年は月平均 48.5 人のクライアントが、延べ 40,493 時間のサービスをうけました。これらのサービスの中には、専用バスによる送迎、軽い朝食、栄養のバランスの取れた昼食、スナックなどが含まれており、体操、ゲーム、陶芸、手工芸、ゲスト・アーティストによるコンサートなど、バラエティに富んだプログラムを通して、クライアントが心身の健康を維持向上して、充実した老後をおくれるよう企画されています。

カウンセリング (ソーシャル・ワーカー：フランシス・チカヒサ)

日英バイリンガルのフランシス・チカヒサとケース・マネジャーにより、月平均 110 時間のサービスが、提供されました。これは前年度に比べて 30% の増加になります。

この他カウンセラーの指導で、ボランティア・ベースのシニア・プログラム“アウト・オブ・ザ・ハウス”が 2006 年 1 月から試験的にスタートし、週 2 回(火、木)の午前 10 時半から午後 1 時半まで、家に籠りがちなシニアをボランティアが車で送迎しヨシ・サカイ氏の指導でストレッチ運動、昼食、映画鑑賞、編物、工芸、生け花、ゲーム、テーマに沿って色々な話題を話し合ったり、美術館に出かけるなど、平均して 8、9 人の積極的な参

加が見られて今後が楽しみなグループに育ちつつあります。

ホーム・サポート・サービス (主任：ヘレン・ナカヤマ)

平和テラスや自宅で一人住まいのシニア・シチズンのために、掃除、洗濯、買物、通院の付き添い、調理、身繕いなどのサポートをするこのプログラムは、定住者会の社会福祉サービスのなかでも、最も長く継続しているものです。アダルト・デイサービスとともに、高齢者がナーシング・ホームなどの施設に入所することを出来るだけ避ける、あるいは遅らせて可能な限り独立した余生が送れるような企画されています。今年は、月平均 20 人のクライアントに延べ 4,733 時間のサービスを提供しました。

コミュニティ・文化関連事業 (主任：シャロン・ハラダ)

定住者会のサービスをシニアのための福祉のみに留まらず、壮年、若年層また日系人邦人だけでなく、国籍人種に拘らず広くコミュニティーに提供するために、各種文化クラスや、血液検査による成人病の予防、文化セミナーが開催されました。2005 年 7 月には、文化関連事業の運営資金捻出のために、日舞シカゴ藤間流と J A S C 司太鼓の共演で、太鼓と日舞のタベ「蛍飛ぶ」をノースサイド・大学進学予備高校で開催、公演は大好評、ファン・レイジングも成功でした。2006 年 1 月からシカゴ藤間流(藤間秀之丞師範)が定住者会館に稽古場を移したことを機会に、カルチャー・クラスとして、演歌・民謡舞踊のワークショップを開設、また三味線、篠笛のクラスが増えました。今年度の各種クラスの受講者は 600 余名でした。

レガシー・センター (室長：デボラ・ミエコ・バーズ)

シカゴ日系社会関連の歴史的資料の収集、分類、保存という大切な役目を持つレガシーセンターは、2007 年春の歴史展示会の準備が着々と勧められており、60 周年を控えて最も多忙な部門といえます。キャンプを出た人々のシカゴ転住後の生活の記録に重点をおいて資料集めが続けられています。今年度レガシー・センターでは 92 件のリサーチの需要に応え、高校生のリサーチャーはそのプロジェクトで、シカゴ・メトロ・ヒストリー・フェアで、優秀賞を受賞し、奨学金をうけました。また新しく 30 件の資料の寄贈を受け、資料室の内容がますます充実してきました。

定住者会の個々のプログラムはもちろん、社会福祉団体としてサービスの質の向上を図り、健全な運営を続けてゆくための 10 年計画など、英語ページを参照してください。

PRESIDENT'S MESSAGE

Dear Friends,

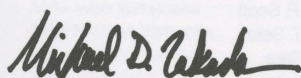
JASC can boast several significant successes at the close of fiscal year 2006 and like many major accomplishments, they are truly the culmination of unending effort and generosity from many people. We are particularly pleased to report financial results that point toward stronger operating results and a future of balanced budgets compared to the operating deficits we faced during the last several years.

Several factors contribute towards the welcome financial stability for the organization. We thank the membership for your unwavering support and participation in our services, programs and activities. We also appreciate the continued strong support from foundations, corporations and our business partners. Special recognition is in order for the hard work, dedication, and guidance the JASC staff provides us throughout the year. There are also all those individual volunteers who help provide the human resources and energy to make our programs and activities succeed as they do. Finally, the board of directors and the Executive Director are also to be acknowledged for their efforts in working together to strengthen the agency's financial condition.

Additionally, I want to especially thank the JASC staff and the board of directors for completing the most recent strategic plan for the agency, the results of which you can read about in detail throughout this year's annual report. As many of you know, this is not a simple or easy task; for an organization which is facing its 60th anniversary year, our future is dependent on critical thinking and thoughtful planning.

In closing, I not only invite you to join us as we celebrate our 60th Anniversary year but as we work to expand our social services and art and cultural programs within the Japanese American and the greater multicultural community in the Midwest.

Sincerely,



Michael Takada

EXECUTIVE DIRECTOR'S MESSAGE

Dear Friends,

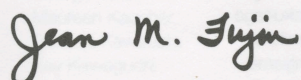
This year began with **envisioning the future** and that inspired us to continue our hard work in overcoming the challenges of the economic downturn in the five years since the tragedy of September 11, 2001. It was very exciting to see that in sharing our vision for JASC's future, we gained new foundation and corporate partners, our support increased from the community, and we expanded our programming in both Cultural Heritage and Senior Services. This resulted in a dramatic increase of support to over \$1,000,000 in revenue. It is my pleasure and honor to thank all of you for making this year such a success!

At the same time, we worked on **strengthening the present** so that our vision becomes a reality.

- Our partnership with Asian Improv aRts Midwest, led by Tatsu Aoki, has been tremendously beneficial; attracting students of all ages. Our visibility and reputation as a cultural center has greatly increased through the JASC Tsukasa Taiko performances with local, national and international media exposure where they generously highlight our partnership.
- Support from foundations has increased, with over \$300,000 for FY '07 to support the Health Access of Japanese American Elders Assessment, the 60th Anniversary events and capacity building projects.

As we look to the next year, our 60th anniversary, we have been thinking about how to **honor our past**. It took extraordinary vision and courage to establish a Japanese American organization in the aftermath of the World War II Internment. The Issei and Nisei, after losing everything, invested themselves in rebuilding the community. A kanreki (60th birthday), means that we have come full circle. And a new beginning deserves a year-long commemoration that we look forward to celebrating together. We end the year honoring the past and looking to the future, stronger than ever.

In deepest gratitude,



Jean Fujii

JASC Donations

These donations cover the time period of July 1, 2005, to June 30, 2006.

Matching Gifts

Abbott Laboratories Employee Giving Campaign
Aetna Foundation
Bank of America
FM Global Foundation
Pfizer Foundation
Prudential Foundation Matching Gifts

Foundation Grants

Chicago Japanese American Council
Chicago Community Foundation
Japanese American National Museum's Discover Nikkei Project
Japanese Mutual Aid Society/Tom T. Arai Bequest
Kraft Foods
United Way/Crusade of Mercy—Asian American Community Outreach Committee

Government

Chicago Department of Cultural Affairs
Illinois Arts Council
City of Chicago Department on Aging

Organizations

Asian Improv aRts Midwest
Christ Church of Chicago
Fujima Ryu of Chicago
Women's Fellowship—Christ Church of Chicago

Organizations In-Kind

FY 2006 (7/1/2005, to 6/30/2006)
Aiko's Art Materials
Asian American Law Enforcement Association
Buddhist Temple of Chicago
Christ Church of Chicago
Christ Church of Chicago Women's Group
Edwin Mellen Press
Hana to Yoko
Heiwa Terrace
Japan Food Corporation, Inc.
Lakeside Church of Chicago
Midwest Buddhist Temple
Mike's Refrigeration
Mitsuwa Marketplace
Nal's Auto
New Horizons
Ravenswood Fellowship United Methodist Church
Sansei Yonsei Athletic Association
Stockton Elementary School
Tampopo Club
Tohkon Judo Academy
University of Illinois at Chicago, Special Collections
Women's Club of Devon Church

Individuals

FY 2006 (7/1/05 to 6/30/06)
Anonymous (29)
M/M Joseph C. Aberer
M/M Kiyoharu Aburano
John K. Adachi
Yayeko Adachi
M/M John Adreani

Michele M. Allen
June K. Aragaki
M/M Paul T. Arakawa
M/M Takeru Asa
M/M Hidemo Roy Asaki
Janet Ayers
M/M Peter Bajor
Frances Benbow
Anthony Charles Berardi
Yoneko N. Berenz
Clare Billingham
Dorothy Bossung
Neil K. Brown
Susan J. Chapman
D/M Ben T. Chikaraishi
M/M Peter G. Cico
Louis Dicerbo
Helen Doe
Kathy Ford
Mary F. Fujii
Masae Fujii
M/M Keith Fujikawa
Martin H. Fujimoto
Ralph Fujimoto
Kikuko Fujimura
M/M Mitsuo J. Fujishima
M/M George Fujiyoshi
Frank T. Fukami
Martha M. Fukami
Mary M. Fukami
Yuji Fukunaga
Roy H. Furukawa
M. Ryan Gantes
M/M Cathy Oda Grodzins
Namiye Hanamoto
Paul M. Harada
Joann Harano
Naomi Hasegawa
Roy M. Hashimoto
Yasuo John Hata
M/M Mike Hattori
K. Arthur Hayashi
M/M Howard Y. Hieshima
Keith Hirashima
Merry Hirata
Tats Hirotsuka
Hannah Hogan
Matsue Pat Honda
M/M George Hosokawa
Mary Y. Hyosaka
George Ichiba
Carl Ichikawa
Kanji Ichiki
M/M George K. Ichishita
M/M Gene K. Ideno
Grace K. Igasaki
Tomi Iijima
Hana Ikeda
Charles Inamine
Florence Ishibashi
Calvin Ishida
M/M George T. Ishida
Masuo Ishida
M/M Yasuo Ishii
M/M Glen Isoda
Harriet H. Itano
Chiyo Ito
M/M George T. Ito
M/M Thomas T. Ito
Karen Kadowaki
Ken Kadowaki
M/M Frank M. Kajikawa
Rita F. Kanaya
M/M Darrell Kaneshiro
Sachiko Kano
M/M Tosh Kasai
Jerry J. Katayama
M/M Alan D. Kato
Kaz Kato
Yoneko Frances Kawabata

D/M Eugene Kawakami
Kay Kawamoto
Evelyn Kebo
Kie Kikuta
Julie K. Kimmel
Lillian K. Kimoto
Lillian C. Kimura
Jo Ann C. King
Tomoko Kizawa
Donna Kobayashi
Ellen Kobayashi
Eva Kobayashi
M/M Roy M. Koizumi
Yasushi Kubo
Ruth K. Kumata
Tamotsu Kuramoto
Elaine E. Kurokawa
D/M Roy Y. Kurotsuchi
M/M Shigeru Kushi
M/M Hiroshi Kuwashima
Marvin Lau
Ann Terumi Maeda
Laura E. Maeda
Eric W. Mah
Calvin Manshio
Mavis Mather
M/M John S. Matsuda
Mariko Matsuda
Pat (Tsuyako) Matsui
Ernest Michio Matsunaga
Rosie T. Matsuura
M/M Thomas Mayahara
Chizuko Mazawa
Masao Menda
Robert Merrick
D/M Edwin Miller
Kei Mine
M/M James K. Mita
Allison D. Mitchell
H. Helen Miyake
Hisako Sue Miyake
Chiyoko Mizuhara
Matsue Momohara
June K. Mori
Yoshiko Mori
M/M George W. Morimitsu
D/M Richard I. Morimoto
Jessie Morisato
D/M Mototsugu M. Morita, Jr.
Pamela Morooka
Patricia Motoike-Smith
Jacqueline M. Motooka
Dr. Glenn H. Murakami
Laura Muraoka
Tomoyo Muraoka
Gerda Muri
M/M Shunichi Nakagawa
Tsuneko S. Nakagawa
Hisako Nakamoto
M/M Akira Nakamura
Fujiye Nakamura
Rebecca C. Nakamura
Miyeko Nakao
Patricia T. Nakashima
Margo Nakayama
Patricia M. Nakayama
D/M Katsumi Neeno
Ruth E. Nehring
M/M Donald Nishibayashi
Asako Nishimura
M/M John T. Nishimura
Ruth A. Nishimura
Susie S. Nishimura
Susan M. Nishioka
M/M Bing R. Nishiura
Masao Nojiri
Maudie Noma
Takeko A. Nomiyama
Sayuri I. O'Connor
June C. Oda

Fumiko Ogasawara
Hideko Ogawa
Miyuki Ohshita
Hanako Okamoto
M/M William Okamoto
Mitsuko Okamura
Nobuko I. Okawa
Keiko Okuizumi
Janice Omachi
Janice H. Omachi-Lee
D/M Harry I. Omori
Mitzi Omura
May One
D/M Clyde H. Ono
M/M Kiyoshi Ono
M/M Hideo Onoda
M/M James M. Onoda
M/M Robert K. Oshiro
M/M Shoichi Oshiro
Yuki Oshiro
M/M James A. Ouchi
Winnie Furusho Ricker
Pauline Rossen
Philip C. Roth
Lisa A. Sakai
M/M Jiro Sakamoto
M/M Robert Y. Sakurai
M/M Fred Sasaki
Rev. Kei Satoh
Suzanne R. Sawada
Lawrence D. Schectman
Shigeo P. Scott
Michele T. Sera
Shunso Sera
Sam Shibata
Yoshio Shibazaki
Bruce Shimizu
Takeo Shimizu
M/M Yoneo Shimomura
M/M Hiroshi Shimotake
Margaret Shintaku
Yoneko K. Shintani
Misao Shiratsuki
Sumiko Shiratsuki
M/M Donald W. Sloan
Midori Sugimoto
Christine S. Sumida
Joseph K. Suzuki
Sachi Suzuki
Haruko Tademoto
Mary Tagami
M/M Kenichi J. Takaki
Agnes H. Palmejar Takaki
Mary S. Takami
Yoneko Takami
Chizu Takaoka
Kiyoko Takemoto
Goro Takeshita
Asako Takusagawa
Hideko Tamanaha
M/M Kiyoshi Tamanaha
M/M Alvin K. Tamura
Ken Tamura
Ralph K. Tamura
M/M Seizo Tamura
Mary Y. Tanaka
M/M Yoshitaka Tanaka
Benjamin S. Tani
May Tanii
M/M Takeshi Tanimoto
Jim Tanouye
Hisako Tashiro
Mary M. Terada
Shizue Sue Terusaki
M/M David J. Toguri
Jennifer K. Toguri
Nobuo Tokunaga
Chiye Tomihiro
Alvin Tomiyama
M/M Henry I. Toyama

Naomi Negi Tran
 M/M Tom T. Tsugawa
 M/M Fred Y. Tsuji
 Ruby D. Tsuji
 Joan T. Tsuruda
 Lily M. Turuda
 M/M Shoji Uchida
 Mitsu Uchimoto
 M/M William S. Ujjiye
 Henry Umeki
 Thomas Uyechi
 M/M Linda S. Kawano/Charles C. Valauskas
 Kiyoshi Wakatani
 James Walthour
 Grace Watanabe
 Lani Witt
 M/M Cary Wong
 Ted Yabuta
 D/M Ernest I. Yahiro
 M/M Howard Yahiro
 Yoshio Yamada
 Ben K. Yamagiwa
 George H. Yamagiwa
 Kay K. Yamagiwa
 Terry Yamagiwa
 Julie Yamaguchi
 M/M Masao T. Yamaji
 Iwao Yamamoto
 Martin Yamamoto
 Midori Yamamoto
 M/M Iwao Yamanaka
 M/M Michael Yamaoka
 George N. Yamasaki
 Mary Yamasaki
 M/M Steven H. Yamasaki
 Takeshi Yamashita
 M/M George Yamate
 Sandra Yamate
 M/M Steve Yamauchi
 M/M Perry Y. Yano
 Lucille A. Yee
 Toshiye Yokota
 M/M Kenneth Yoshida
 James Y. Yoshimura
 Shigeko Yoshimura
 Kiyoshi Yoshimura
 M/M William J. Yoshino
 Kenneth K. Yoza
 Denise Hanako Zimmerman

Individuals In-Kind

(7/1/05 to 6/30/06)

Roy Akune
 Frances Chikahisa
 Carl De Vita
 Ben & Kimi Enta
 Barbara Finn
 Mary Ann Follmer
 Fred Fujii
 Kiyoko Fujii
 Lynn Harada
 Ross Harano
 Margaret Hiratsuka
 Francine Hori
 Jean Inouye
 Kenny Isono
 Dorothy Ito
 Eilyn Iwaoka
 John Iwaoka
 Mary Iwaoka
 Fay Kadowaki
 Lynn Kaihara
 May Kambara
 Amy Kato
 George Kato
 Maureen Kaucher
 Frances Kawabata
 Kay Kawaguchi
 Flo Etsuko Kayumi Kim

Ryoko Kobayashi
 Jody and Carol Koizumi
 Tom Koizumi
 Ruth Kumata
 Maxine Kuroda
 Elaine Kurokawa
 Linda Minaga
 Junko Mizuta
 George Morimitsu
 Yoshiko Mori
 Laura Muraoka
 Megumi Nakajima
 Joyce Nakanishi
 Naomi Negi Tran
 Kiyoto Nishimoto
 Nancy Oda
 Diane Ohi
 Tetsu Okuhara
 Chieko Onoda
 Merry Oya
 Kazue Ozima
 Smokey Sakurada
 Lisa Sloan
 Arlene Suekama
 Sachi Suzuki
 Noriko Takada
 Asako Takusagawa
 Terry Tanabe
 Alvin Tomiyama
 Alice Towata
 Arnold Watanabe
 Asako Watanabe
 Ellen Wu
 Dorothy Yahiro
 Mitsuye Yamada
 Takeshi Yamashita
 Gary Yasutake
 Ms. Yoshimura
 Glenn Yoshimura
 Kiyoshi Yoshimura

2005 Fuji Fest

CORPORATE SPONSORS

Purple Orchid Level
 Harmony Nursing & Rehabilitation Center
 Japan Airlines
 Yamamoto-Yoshida Family

Cherry Blossom Level

ComEd, an Exelon Company
 LJT Agra, Inc.
 United Bindery Services

Blue Iris Level

Astellas Pharma U.S., Inc.
 Barnes & Thornburg, LLC
 The Boeing Company
 First American Bank
 Harris Bank
 Masuda, Funai, Eifert & Mitchell
 Omron Electronics, LLC
 Yamada & Associates, PC
 Yanmar America Corporation

CORPORATE DONORS

Bigston Corp., USA
 Gim Electric Co., Inc.
 Hamilton Partners
 Kikkoman Foods, Inc.
 Nak-Man Corporation
 Nomura Enterprises, Inc.
 Sumitomo Metal USA Corporation
 TDK Corporation of America

TABLE SPONSORS

M/M Peter Bajor
 BlueCross BlueShield of Illinois
 Buddhist Temple of Chicago
 Chicago Chapter JACL

Christ Church of Chicago
 Jacquelin Denofrio
 Yaho Fujii
 Jean and Kiyoko Fujii
 Steven Hamlin
 Midwest Buddhist Temple
 Mark Murphy
 Rebecca Nakamura
 Onoda Family & Friends
 Marina Saito
 Glenn Sugiyama
 M/M Cary Wong

FRIENDS

(Monetary donations.)

Anonymous
 Janet Ayers
 Elvin Y. Chan/Joanna E. Su
 Eugenie K. Chiu
 Mary Doi & Jac Cerney
 M/M Paul Doi
 Kazuko Ernst
 Lisa, Keith & Wyatt Fujikawa
 Fred Y. Fujii
 M/M Yoshihiro Harada
 George Ichiba
 Mary Iwaoka
 Dr. Victor Izui
 Frances Yoneko Kawabata
 Kazumi Kawamoto
 M/M Eugene T. Kimura
 M/M James Kumaki
 Ruth K. Kumata
 Sharon Legenza
 Cara T. Lockwood
 M/M Nathan Lofton
 William Y. Makino
 Chizuko Mazawa
 M/M Ted S. Mizuno
 Sueno Migaki
 Helen Miyake
 Kathryn K. Mlsna
 Matsue Momohara
 D/M Richard Morimoto
 Dr. Joyce C. Morishita
 Mary H. Nakagawa
 Tsune Nakagawa
 Rebecca C. Nakamura
 R/M Masaru Nambu
 Im Noeun
 M/M William Okamoto
 Dr/M Harry Omori
 M/M James Ouchi
 Louise Sonoda
 M/M David Takada
 Nobuko Takaki
 Asako Takusagawa
 M/M Kiyoshi Tamanaha
 Dennis R. Torii
 Lily Turuda
 M/M William Ujjiye
 Jane Yakushiji
 Sue Yakushiji
 Futami Terri Yamaguchi
 M/M William Yoshino
 Tampopo Club

RAFFLE & SILENT AUCTION DONORS

Adler Planetarium & Astronomy Museum
 M/M Roy Akune
 Anne Namba Designs
 Ann Sather's Restaurant
 Aoya, Inc.
 M/M Ernie Banks
 BlueCross BlueShield
 Bob Chinn's Crab House
 Bridgeview Bank
 Chicago ATA Black Belt Academy
 Chicago Blackhawk Hockey Team, Inc.
 Chicago Cubs

Chicago Sinfonietta
 Chicago White Sox
 Chicago Wolves Pro Hockey Team
 Frances Chikahisa
 City of Chicago-Cultural Affairs
 Club Lucky
 ComedySportz Theatre
 Court Theatre
 Eli's Cheesecake
 Barbara Finn
 Floating World Gallery
 Frank's Jewelry
 M/M Frank Fujikawa
 Jean M. Fujii
 Gethsemane Garden Center
 Philip F. Goff
 M/M Mickey Hamano
 Hana to Yoko
 Harpo Productions
 Harrah's Joliet Casino and Hotel
 Mikio Hasunuma
 Dr. Stephen Hashioka
 Heaven on Seven
 Hilldale Golf Club
 Duc Ho & Salon Buzz
 Masanobu Hoshikawa
 Ritsuko Inouye
 Tomi Inouye
 Intelligentsia Coffee Co.
 Lynn Janik
 Japan Airlines
 Japanese American Service Committee
 The Joffrey Ballet
 John G. Shedd Aquarium
 Fay Kadowaki
 Kamehachi
 May Y. Kambara
 Kevin, The Restaurant
 Kimono Designs
 Kizoku Sushi & Lounge
 Knitting Workshop
 Albert Koga Trust
 Rochelle Kopp
 Margie Korshak, Inc.
 La Donna Restaurant
 Lettuce Entertain You Enterprises
 The Lighthouse Keeper
 Cara T. Lockwood
 M. Henry Restaurant Chow for Now
 MJ2 Bistro
 Rosie T. Matsuura
 Menopause, the Musical
 Merry Faery Uncluttering & Organizing
 Jane Miller
 Monitor Cleaners
 D/M Richard I. Morimoto
 Music in the Loft
 Kimiko Nakamura
 Notebaert Nature Museum
 Oak Park Wholesale
 Planet Obi
 Lynn Oda
 M/M Hosen Oshita
 Onomoli
 Renga-Tei Restaurant
 Resorts East Chicago Casino
 Roy's Chicago
 Lidia Rozmus
 Toshi Sakata
 M/M Leonard Sakoda
 Suzanne Sawada & Leonard Joy
 Second City
 Shaw's Crab House
 Haru Shimojima
 Stir Friday Nite
 M/M Donald Sloan
 Stir-Friday Night!
 George Suyeoka
 Sunshine Cafe
 Sunshine Landscaping Design LLC

Szechwan Restaurant
 Tails in the City
 Tampopo-Kai
 Thousand Waves Spa for Women
 Joanne Tohei
 To Pho Cafe
 Towata Fine Arts Gallery
 Triangle Camera
 Charles P. Trumbull/Deep North Press
 Tsukie Japanese Restaurant & Lounge
 Union League Club of Chicago
 Urban Oasis
 WhirlyBall
 Hon. Mitoji Yabunaka
 Takuei Yamada
 Yancha by Shuko Akune
 Joyce Yoshino
 M/M William J. Yoshino
 Zanies Comedy Club

2005 Holiday Appeal Donors

Barry-Regent Cleaners
 M/M Koki Abe
 Anonymous
 Janet Ayers
 Alyse Azuma
 Walter Carr
 Michiko Frances Chikahisa
 M/M James V. D' Ottavio
 M/M Takashi Dodohara
 M/M Tak Enkoji
 Marcia A. Faye
 Karen Freel
 Fred Fujii
 Masae Fujii
 M/M Frank S. Fujikawa
 M/M Benjamin Fujimoto
 M/M Mitsuo J. Fujishima
 M/M Stanley Fukai
 Frank T. Fukami
 Mary M. Fukami
 Henry K. Fukui
 Roy Fukunaga
 Roy H. Furukawa
 M/M Jim Goodman
 Gaille A. Higashi
 Shizuye Hikida
 May K. Hirai
 Hannah Hogan
 George Ichiba
 Tomi Iijima
 M/M Tetsuo Iko
 Marion Ishii
 Emiko Ishikawa
 Peggy L. Ishikawa
 Julie Itahara
 D/M Seiji Itahara
 M/M George T. Ito
 Dr. Robert S. Iwaoka
 Dr. Victor S. Izui
 Steven K. Izzo
 Ken Kadowaki
 Grace M. Kajita
 May Y. Kambara
 M/M Enoch H. Kanaya
 M/M Tosh Kasai
 M/M Fred M. Katsuyama
 Yoneko Frances Kawabata
 M/M Yoshio F. Kawaguchi
 M/M Jay Kawakami
 M/M Raymond Y. S. Kim
 Rich Kimoto
 Donna Kobayashi
 Eva Kobayashi
 M/M James K. Kumaki
 Dorothy S. Kuse
 Marcia L. Kushino
 Eric W. Mah
 M/M Calvin Manshio/Peggy Wallace
 Keiko Matsushita

Chizuko Mazawa
 M/M James K. Mita
 Mark M. Mitsunaga
 M/M Victor M. Miyata
 M/M Shu Miyazaki
 M/M Takanori Mizuta
 M/M George W. Morimitsu
 D/M Richard I. Morimoto
 Jessie Morisato
 M/M Jerry S. Morishige
 Dr. Joyce C. Morishita
 Mort Morita
 Grace F. Motooka
 Mary Muramoto
 M/M Shunichi Nakagawa
 Tsuneko S. Nakagawa
 Jean Nakamoto
 Carolyn K. Nakamura
 M/M Toshio Nakanishi
 R/M Masaru Nambu
 Mieko Nasu
 Sally Nishi
 Asako Nishimura
 M/M John T. Nishimura
 Ruth A. Nishimura
 Takeko A. Nomiya
 Fumiko Ogasawara
 Linda M. Ogawa
 M/M Robert E. Ogi
 M/M Hideo Oishi
 Rose S. Okabe
 M/M Kazuichi K. Okigawa
 Lydia Omori
 May One
 M/M Mitsuo Ono
 M/M Hideo Onoda
 M/M Robert K. Oshiro
 Marie K. Otaka
 M/M Masato Ozaki
 M/M Sam Ozaki
 Gregorio Rivera
 Toshiko Sahara
 Henry K. Sakai
 M/M Yoshitaro Sakai
 M/M Leonard Sakoda
 Frank Sasai
 M/M Masato Sasaki
 M/M Kane K. Senda
 Hisako Seo
 Stanley S. Serikaku
 Rosemary I. Shieh
 Anne L. Shimojima
 Tomiko Shimojima
 M/M Shiro F. Shiraga
 Yukitaka Shizukuda
 M/M Donald W. Sloan
 Joseph K. Suzuki
 Sachi Suzuki
 Sadako Szathmary
 M/M David T. Takada
 Michael D. Takada
 M/M Michael K. Takaki
 Midori Takaki
 Richard K. Takaki
 M/M Ichiro Takehara
 Ralph K. Tamura
 Frank T. Tanaka
 Benjamin S. Tani
 M/M Masayasu B. Taura
 Mary M. Terada
 Nobuo Tokunaga
 M/M George Torimaru
 M/M George K. Towata
 M/M Fred Y. Tsuji
 Yoneko M. Tsurusaki
 M/M Keith Uchima
 Thomas Uyechi
 Linda Murakishi Whitted
 Yoshio Yamada
 Lois R. Yamaguchi

Terri Yamaguchi
 Alice E. Yamamoto
 George N. Yamasaki
 Takeshi Yamashita
 M/M Yoshio Yamashita
 Gary H. Yasutake
 Lucille A. Yee
 Shigeo Yoshimura
 M/M Ronald T. Yoshino

Fireflies in Flight Donations

Tonko Doi
 Fujima Ryu of Chicago
 M/M Frank Fujikawa
 D/M Michael Harada
 M/M Yoshiro Harada
 Susan Humphrey
 Himeko Ide
 Takeko Ishikawa
 Jo Ann C. King
 Donna Melkonian
 Jean Mishima
 M/M Perry Miyake
 Joyce Morimoto
 Na Kupuna Ukulele Club
 Rebecca Nakamura
 Peter Poor
 M/M Thomas Rowland
 Jessica K. Smith
 Tomoe Sunahara
 M/M David Takada
 Hideko Tamanaha
 Sumie Tanimura
 Thursday Night Dance Group
 M/M George Torimaru
 Jane Yakushiji

Special Membership

(as of 9/1/06)

PATRON

Mr. Mickey Hamano
 M/M James K. Kumaki
 Ms. Donna Mukogawa
 M/M Mitsuzo Shida
 D/M Thomas Shimoda
 Mrs. Linda Murakishi Whitted

SUPPORTER

Ms. Jody Oshita-Bajor
 M/M Colin Hara
 M/M Aylene I. Hasegawa
 Hon. Lynne Kawamoto
 Mr. Eric W. Mah
 M/M Shu Miyazaki
 Mr. Henry K. Sakai
 Mr. John Sasaki
 M/M Shiro F. Shiraga
 M/M Go Sugiura
 Ms. Jane Yakushiji
 Mr. Takeshi Yamashita
 Ms. Kiyo Yoshimura
 M/M Bryan E. Zises

FRIEND

D/M Harold Arai
 Ms. Kiyoko Kasai Fujii
 Ms. Jean M. Fujii
 Mrs. Yoshimi Golden
 Ms. Toyoko Hagio
 Mr. Paul M. Harada/Dr. Michelle Nishina
 M/M Kaz Horita
 D/M Seiji Itahara
 M/M Ellen Maeda/John C. Janka
 Mrs. May Y. Kambara
 D/M Henry M. Kawanaga
 M/M Calvin Manshio/Peggy Wallace
 Dr. Charles Martinez
 Ms. Patricia M. Matsumoto

M/M Ted S. Mizuno
 Dr. Akemi Lynn Nakanishi
 R/M Masaru Nambu
 Mrs. Asako Nishimura
 Mrs. Linda M. Ogawa
 Mrs. Winnie Furusho Ricker
 Mrs. Gail Shigehira Rodin
 Mr. Kevin Saiki
 Mr. Frank Sasaki
 M/M John Sasaki
 Mr. Kenneth Schug
 Ms. Barbara Shikami
 Mr. James Y. Shikami
 Mr. Michael D. Takada
 Mrs. Chizu Takaoka
 Dr. Joe Takehara
 Mr. Hiroshi Tokubo
 M/M Dennis R. Torii
 Mrs. Ayako Yamada

JASC Scholarship Funds

Anheuser Busch
 Sam Fukaye
 Frank T. Kambara
 Southside Nisei Bowling League
 Jean E. Taketoshi
 Fred Toguri
 William T. Yamamoto

If we have inadvertently omitted your name from any list, please call Sharon Harada (773.275.0097 x229) at the JASC office. Thank you.

The 2006 JASC Membership List can be found in the Member Services & Programs Book.

This FY 2006 annual report covers the time period July 1, 2005, to June 30, 2006.

Japanese American Service Committee does not discriminate in admission to programs or treatment of employment in programs or activities in compliance with the Illinois Human Rights Act; the U.S. Civil Rights Act; Section 504 of the Rehabilitation Act; the Age Discrimination Act; the Age Discrimination in Employment Act; and the U.S. and Illinois Constitutions. If you feel you have been discriminated against, you have a right to file a complaint.

Memorial Gifts [FY 06—July 1, 2005, to June 30, 2006]

DONOR

Boone School Social Fund
Matsumoto Family Trust
Boone School Teachers of the K-2 Cycle
M/M Yosh Amino
M/M Yosh Amino

M/M Yosh Amino
Anonymous
Ms. Jane Anselmino
Ms. Karen Blacker
M/M Michael Borgstrom
Ruta Buntinas
M/M Debbie & Bob Burns
M/M Debbie & Bob Burns
Ms. Susan E. Dietz
M/M Paul Doi
Mr. Lee J. Flory
Ms. Judith E. Fors
Ms. Jeanne Fowler
Mr. Robert Fujioka
Ms. Kiyoko Kasai Fujiu
Ms. Kiyoko Kasai Fujiu
Mr. Henry K. Fukui
Mrs. Yoshimi Golden
Mrs. Yoshimi Golden
Mrs. June Harada
Mrs. June Harada
D/M Michael Y. Harada
M/M Yoshiro Harada
M/M Yoshiro Harada
M/M Yoshiro Harada
M/M Yoshiro Harada
M/M Yoshiro Harada
M/M Yoshiro Harada
M/M Yoshiro Harada
M/M Yoshiro Harada
Mrs. Katherine Hashiguchi
M/M Stanley K. M. Hew
M/M Frank Hiratsuka
Ms. Rose Honda
Mrs. Sandra M. Hopkinson
Asayo, Yosh, Masa, Toki, Nobu,
and Aki Horibe
Mr. George Ichiba
Mr. George Ichiba
Mr. Muneo R. Imon
Mrs. Jean S. Inouye
Rev. Samuel Ishibashi
Rev. Samuel Ishibashi
Mr. E. S. Itagaki
D/M Seiji Itahara
Ms. Ellyn J. Iwaoka
Ellyn J., Judy M., and Robert S. Iwaoka

M/M Rowland T. Joichi
M/M Rowland T. Joichi
M/M Rowland T. Joichi
Mr. Ken Kadowaki
Mr. William Kagami
Mrs. May Y. Kambara
Mrs. May Y. Kambara
Mrs. Merle Kaneko
M/M Neil Y. Kanemoto
M/M Richard Y. Karasawa
M/M Ken Katayama
M/M Yoshio F. Kawaguchi
M/M Yoshio F. Kawaguchi
M/M Yoshio F. Kawaguchi
M/M Yoshio F. Kawaguchi
M/M Mark P. Klocksinn
Ms. Donna Kobayashi
Mrs. Vera Kurecki
M/M Stanley S. Kurokawa
Mrs. Yemiko Kurokawa
Na Kupuna Ukulele Club
Na Kupuna Ukulele Club
M/M Tomomi Matsushima

IN MEMORY OF

Shigenobu Ozima
William Ichiba
Shigenobu Ozima
William Y. Ichiba
Chiye Kagami, Sadayuki Mouri,
Harold Nemoto, Yae Imon,
Hiromi Miyagawa, Naoko Kitahata

Tom Kaihara
William Ichiba
Yutaka and Haruko Kanemoto
Sueko Ushiro
Shigenobu Ozima
Shigenobu Ozima
Tsumako Maeda
Tom Kaihara
Shigenobu Ozima
Jean Lee
Shigenobu Ozima
Thomas Fujibayashi
Joan Fowler
William Fujioka
Yae Imon
Sumi Horibe
Keiko Noma
Hajime John Yoshimura
Sachiye Aono Yoshimura
Tetsuo Itahara
Jean Taketoshi
Masaro Harada
Loretta Witkowski
Tom Kadowaki
Tomie Fujii
Tom Kaihara
John Takemoto
Chizuko Kanii
Tsumako Maeda
Tets Itahara
Kiyoko Nakashima
Haruko & Yutaka Kanemoto
William Y. Ichiba
William Fujioka
Paul Otake
Sumi Horibe

William Y. Ichiba
Flo Ichiba
Yaeko Imon
Shigeko Yamada
Tom Yamayoshi
Sats Takemoto
Willy Fujioka
Tets Itahara
Chiyoko Oda
Sam Isamu Iwaoka, Frank Kenichi
Morimitsu, Wesley Shigeru Ogawa,
and John Jun Iwaoka

Aki Watanabe
Keiko Noma
Thomas Kushino
Ruth Uchima
Kay Noma
Frank Kambara
Shigenobu Ozima
Richard Akutagawa
Tsumako Maeda
Willy Fujioka
Kiyoko Nakashima
Chizu Torigoe
Loretta Witkowski
Tsumako Maeda
John Takemoto
Shigenobu Ozima
Nobu Kobayashi
Tomie Fujii
Tom Kaihara
Yozzo G. Kurokawa
Ruth Uchima
Tom Kaihara
Keiko Noma

DONOR

M/M Steven Y. Minaga
M/M George W. Morimitsu
Ms. Yoko Morita
M/R Gary T. & Patricia A. Nakai
M/M Hiroshi Nakano
Ms. Mieko Nasu
Ms. Kyoko Nishikawa
Mr. Paul Y. Nishimoto
Mrs. Ruth A. Nishimura
Ms. Patricia O' Halloran
Ms. Hanako Okamoto
Mr. Yoji Ozaki
Ms. Janice Ozima
Mrs. Kazue Ozima
Mrs. Carmen J. Porter
Mrs. Marjorie S. Rogasner
M/M David L. Rouleau
M/M Donna Sagami/David Handwerk
M/M George I. Saiki
D/M Frank Sakamoto
M/M Jiro Sakamoto
M/M Steve Samson
M/M Masato Sasaki
M/M Andrew M. Sato
M/M Takeshi Shibayama
Mr. James Y. Shikami
M/M Yoneo Shimomura
Ms. Misao Shiratsuki
Mrs. Tomoe Sunahara
Mrs. Sachi Suzuki
Mrs. Sachi Suzuki
M/M David T. Takada
M/M David T. Takada
M/M David T. Takada
Mrs. Mary Takaki
Ms. Hisako Takami
M/M George S. Takemoto
M/M George S. Takemoto
M/M George S. Takemoto
Mrs. Kiyoko Takemoto
Mr. George Taketoshi
Ms. Pauline Tanabe
M/M Yoshitaka Tanaka
Mr. Jim Tanouye
M/M Gerald A. Thalman
Mrs. Grace Torii
Mr. Rick Tsuru
M/M Robert K. Tsuru
M/M Robert K. Tsuru
Ms. Hattie Wallen
Mrs. Linda Murakishi Whitted
Mr. Philip Wong
Ms. Sue Yakushiji
M/M Joi Yamagata
Ms. Terri Yamaguchi

Mr. Hiroshi Yamane
M/M Michael Yamaoka
Ms. Mary Yamasaki
Ms. Kristine Yasutake
M/M Jack Yau
M/M William J. Yoshino
M/M William J. Yoshino
M/M William J. Yoshino
M/M James Zimmerman
Ms. Rebecca E. Zimmerman

In Honor/Recognition Donations

DONOR

Mrs. Yoshimi Golden
M/M Yoshiro Harada
M/M Yoshiro Harada
Ms. Cheryl Ikemiya/Doris Duke
Charitable Foundation
M/M Steven Y. Minaga

IN MEMORY OF

Chico Minaga
Arthur and Virginia Morimitsu
Shizue Arakawa
Kimi Enta
Kimi Enta
Late Isseis
William Fujioka
Toshio Nishimoto
Shigenobu Ozima
Alice Hashimoto
Richard Akutagawa
Tom Kadowaki
Shigenobu Ozima
Shigenobu Ozima
Shigenobu Ozima
Florence Y. Ichiba
Shigenobu Ozima
Shigenobu Ozima
John Takemoto
William Y. Ichiba
Keiko Noma
Sueko Ushiro
Joan Fowler
Tatsuko Ogino
Florence Ichiba
Jean Taketoshi
Shigenobu Ozima
Shim Kawaguchi
Sumiko Shiratsuki
Hideko Yoshimoto
Hank Suzuki
William Y. Ichiba
Keiko Noma
Kimii Yamauchi
Yaeko Imon
Jim Nishimoto
Yaeko Imon
John Takemoto
Yaeko Imon
Tom Kaihara
John Takemoto
Chiyo Taketoshi
Kiyoko Nakashima
Paul Otake
Margaret Tanouye
Akira Watanabe
Sueto Charles Torii
William Y. Ichiba
Kay Kanesako
William Y. Ichiba
Tom Kaihara
Ben Matsuoka
Quincy Wong
Harry & Ted Yakushiji
William Y. Ichiba
Jean Taketoshi Scholarship and
Chizuko Kanii
M/M Fred & Yoshiye Yamane
Tomie Fujii
Aiko Tomita
Gary Yasutake
Estate of Toshiko K. Mayeda
Tom Kaihara
Sueko Ushiro
Tsumako Maeda
Yoshiko Zimmerman
Shigenobu Ozima

IN HONOR OF

Yoshizo James Yoshimura's 90th
Birthday
M/M Joe Tosh Harada's 50th Wedding
Anniversary
M/M Mas Taura's Birthdays
Dorothy Kaneko
Chico Minaga's Birthday

JASC CONDENSED STATEMENT OF ACTIVITIES

Condensed Statement of Activities for the year ended June 30, 2006.

Support and Revenue

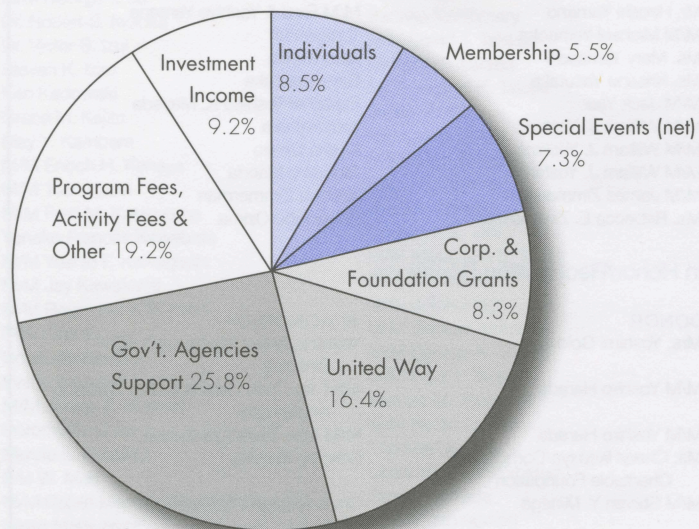
Individuals	\$108,538
Corporation and Foundation Grants	\$105,986
United Way	\$210,000
Membership	\$69,980
Special Events (net)	\$93,463
Governmental Agencies Support	\$330,343
Program Fees, Activity Fees and Other	\$245,491
Investment Income	\$117,335
TOTAL SUPPORT AND REVENUE	<u>\$1,281,136</u>

Expenses

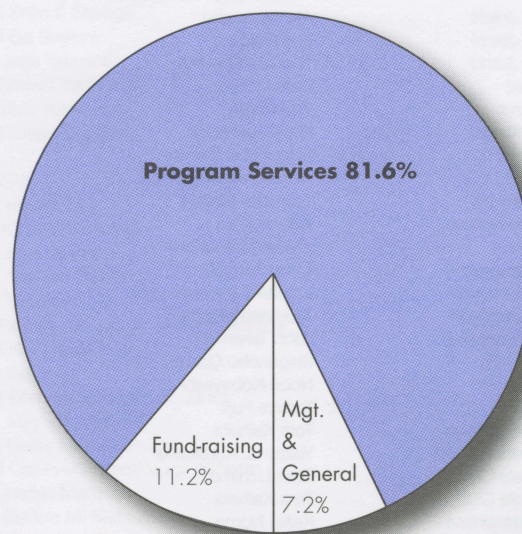
Program Services	\$798,791
Management and General	\$70,771
Fund-raising	\$109,718
TOTAL EXPENSES	<u>\$979,280</u>
EXCESS OF REVENUE AND SUPPORT OVER EXPENSES	<u>\$301,856</u>

The above figures are unaudited. A complete copy of the financial statements, audited by John D. Kopczyk, Ltd., will be available for viewing at the JASC office.

Support and Revenue



Expenses



BOARD OF DIRECTORS

EXECUTIVE BOARD

President Michael D. Takada
Morgan Stanley, Manager Card Member Service & Banking

VP Finance Alan Teraji
First American Bank, Senior Executive Vice President

VP Membership Joyce A. Morimoto
Educational/Children's Museum Consultant

VP Programs Carol Miyake
Elmhurst Rehabilitation, S.C., Office Manager

VP Marketing Michael Tanimura
Principal, Silver Image Creative

Secretary Sharon M. Hidaka
Trust Associate, First American Bank

BOARD MEMBERS

Jody Oshita Bajor
Manager of Business Development & Marketing, NBC 5 Chicago

Jacquelin Denofrio
Manager, Strategic Partners, United Airlines

Erika Kono
Associate Director, Japan America Society

James Kono
Principal Partner, HRP Realty, Inc.

Elaine Kurokawa
Technical Assistant, Chicago Teleservice Center,
US Social Security Administration

Rebecca Nakamura
Sales and Marketing Coordinator, Sanyo E & E America Company

Lynn K. Oda
Director, Client Services, The Hollins Group Inc.

James Onoda
Technology Coordinator, Chicago Public Schools

Marina Saito
Partner, Sonnenschein Nath & Rosenthal LLP

Lisa Sakai
Vice President, LJT Agra Corporation

Glenn Sugiyama
Executive Vice President, DHR International

Jennifer Rebecca Tani
Program Manager, Community Building, United Way

Dru Yamagiwa
Information Technology Specialist, Environmental Systems Design

Sandra S. Yamate
President, Polychrome Publishing Corp.

JASC STAFF

ADMINISTRATIVE STAFF

Jean M. Fujiu, LCSW, Executive Director
Sharon Harada, Assistant Executive Director
Carol Yoshino, Special Events Coordinator
Dudley Yatabe, Controller
James Trigueros, Systems Coordinator
Karen Kanemoto, Office Assistant
Ryan Toguri, Office Assistant
Sumi Tanimura, Receptionist
Emiko Ishikawa, Receptionist
Sabah Auodesho, Custodian

ADULT DAY SERVICES

Melba Ristow, RN, Supervisor
Nanytes (Tess) Cana, RN, Day Care Nurse
Joseph Magdaraog, Activity Planner
Doris Mason, Activity Planner/Driver
Cecilio Ocasio, Driver

COUNSELING

Frances Chikahisa, MSW, LCSW, Social Worker
Fujio Sato, MSW, Case Manager

HOME SUPPORT SERVICES

Helen Nakayama, Supervisor
Ofelia Calayag, Homemaker
Jadwiga K. Czerniejewska, Homemaker
Danuta Knapik, Homemaker
Kikue Nagoya, Homemaker

CULTURAL & COMMUNITY AFFAIRS

Sharon Harada, Coordinator
Kay Kawaguchi, Assistant Coordinator
Deborah Mieko Burns, CA, Archivist
Michael Courtney, Archival Assistant
Karen Kanemoto, Archival Assistant

Writer: Michael Tanimura
Photographer: Kay Kawaguchi
Graphic Designer: Mi Jeong Kim
Editors: Karen Kanemoto, Sharon Harada

Mission Statement

The mission of the Japanese American Service Committee is to preserve and raise awareness of Japanese American culture and heritage, and promote the physical and spiritual well-being of Japanese Americans and the greater multicultural community in the Midwest.

Founded August 30, 1946, the JASC is a non-profit, 501(c)3 social services agency.



JASC

4427 N. Clark Street
Chicago, Illinois 60640

Telephone administration

773.275.0097

social services

773.272.7212

Fax

773.275.0958

E-mail

jascinfo@jasc-chicago.org

Web site

www.jasc-chicago.org